

Operations Manual

Demon Storm Range

STORM 1

STORM 2

Storm 1 with Hose Reel

Storm 2 with Hose reel

Storm Wall Mounted 1

Storm Wall Mounted 4

Storm Twin Cabinet 1

Storm Twin Cabinet 4

Declaration of Conformity (E.H.S.R)

We, Demon International Limited of Abbots Close, Lee Mill Industrial Estate, Ivybridge, Devon, PL21 9GA Declare this machine must be operated in accordance with the operation and safety instructions as supplied with this machine. This machine is manufactured in accordance with the following standards.

HSE PVB PM - BS415 Part 1 - BS5415 Section 2.4 1986

This instruction manual is relevant only to the following machine and will not be kept updated unless specifically requested by the customer. However any changes to the operating procedure or changes which might affect the safety of this machine will be notified to the registered owner of this machine only.

| | |
|------------------|--|
| Machine Type | |
| Serial Number | |
| Voltage | |
| Working Pressure | |
| Date of Supply | |

Manual Contents

| | |
|----------------|---------------------------------|
| Page 3 | Technical Specifications |
| Page 5 | Preparation & Operation |
| Page 10 | Fault Finder |
| Page 12 | General Arrangement of Machines |
| Page 19 | Machine Pumps |
| Page 23 | Machine Unloaders |
| Page 29 | Electrical Drawings |
| Page 38 | Machine Lance & Hoses |

Technical Specifications

Storm 1

| | | | | |
|-------------------------------|------------|---------|--------------|-----------------|
| Pump | ARXT 11.14 | | Motor | MTR00100 |
| Pump pressure | 100 bar | 1500psi | Motor output | P1 2.2KW |
| Flow rate | 11 lpm | 2.45gpm | Motor input | P2 3.0KW |
| Max by pass setting | 120 bar | 1750psi | Max current | 12.5 amps |
| H.P Nozzle | 2504 | | Voltage | 230V + or - 10V |
| Pump oil | 10W40 | | Insulation | Class F |
| Unloader valve (No Hose Reel) | ARMM4B/C | | Duty cycle | 100% |
| Unloader valve (Hose Reel) | ARGM3 | | Protection | IP54 |
| Noise | | | | |

Storm 2

| | | | | |
|---------------------|----------|---------|--------------|----------------|
| Pump | XT 11.14 | | Motor | MTR00301 |
| Pump pressure | 100 bar | 1200psi | Motor output | P1 2.2KW |
| Flow rate | 11 lpm | 2.45gpm | Motor input | P2 3.0KW |
| Max by pass setting | 120 bar | 1750psi | Max current | 24 amps |
| H.P Nozzle | 2504 | | Voltage | 110v + or - 5V |
| Pump oil | 10W40 | | Insulation | Class F |
| Unloader valve | ARMM4B/C | | Duty cycle | 100% |
| Noise | | | Protection | IP54 |

Storm Wall Mounted 1

| | | | | |
|-------------------------------|----------|---------|--------------|-----------------|
| Pump | XT 11.14 | | Motor | MTR00100 |
| Pump pressure | 100bar | 1500psi | Motor Output | P1 2.2W |
| Flow rate | 11 1pm | 2.45gpm | Motor Input | P2 3.0KW |
| Max by pass setting | 120 bar | | Max current | 12.5amps |
| H.P. Nozzle | 2504 | | Voltage | 230V + or - 10V |
| Pump Oil | 10W/40 | | Insulation | Class F |
| Unloader valve (No Hose Reel) | ARMM4B/C | | Duty cycle | 100% |
| Unloader valve (Hose Reel) | ARGM3 | | Protection | IP54 |
| Noise | | | Protection | IP54 |

Storm Wall Mounted 4

| | | | | |
|---------------------|------------|---------|--------------|-----------------|
| Pump | RK15.20 | | Motor | MTR00220 |
| Pump pressure | 200bar | 2900psi | Motor Output | P1 5.5W |
| Flow rate | 15 lpm | 3.3gpm | Motor Input | P2 6.6KW |
| Max by pass setting | 210 bar | | Max current | 12.6 amps phase |
| H.P. Nozzle | 2504 | | Voltage | 415V + or - 10V |
| Pump Oil | 10W/40 | | Insulation | Class F |
| Old Unloader valve | ARMM4B/TSS | | | |
| New Unloader valve | ARGM3 | | Duty Cycle | 100% |

Storm Twin Cabinet 1

| | | | | |
|---------------------|------------|---------|--------------|-----------------|
| Pump | ARXT 11.14 | | Motor | MTR00100 |
| Pump pressure | 100 bar | 1500psi | Motor output | P1 2.2KW |
| Flow rate | 11 lpm | 2.45gpm | Motor input | P2 3.0KW |
| Max by pass setting | 120 bar | 1750psi | Max current | 12.5 amps |
| H.P Nozzle | 2504 | | Voltage | 230V + or - 10V |
| Pump oil | 10W40 | | Insulation | Class F |
| Unloader valve | ARGM3 | | Duty cycle | 100% |
| Noise | | | Protection | IP54 |

Storm Twin Cabinet 4

| | | | | |
|---------------------|---------|---------|--------------|-----------------|
| Pump | RK15.20 | | Motor | MTR00220 |
| Pump pressure | 200bar | 2900psi | Motor Output | P1 5.5W |
| Flow rate | 15 lpm | 3.3gpm | Motor Input | P2 6.6KW |
| Max by pass setting | 210 bar | | Max current | 12.6 amps phase |
| H.P. Nozzle | 2504 | | Voltage | 415V + or - 10V |
| Pump Oil | 10W/40 | | Insulation | Class F |
| New Unloader valve | ARGM3 | | Duty Cycle | 100% |
| Noise | | | Protection | IP54 |

| | Valve Kit | Piston Kit | Oil Seal Kit | Water Seal Kit | MINIMATIC REPAIR KIT |
|----------------------------------|-------------|-------------|--------------|----------------|----------------------|
| STORM 1 | 1864 | 2629 | 1872 | 1874 | 2812 |
| STORM 2 | 1864 | 2629 | 1872 | 1874 | 2812 |
| WM 1 | 1864 | 2629 | 1872 | 1857 | 2223 |
| WM4 | 1828 | 2757 | 1856 | 1857 | 2223 |
| FS 1 | 1864 | 2629 | 1872 | 1857 | 2223 |
| FS 4 | 1828 | 2757 | 1856 | 1857 | 2223 |
| Storm Twin Cabinet Washer | 1864 | 2629 | 1872 | 1874 | 2223 |

| Common Part Numbers | |
|-------------------------|-------------------------------------|
| Chemical Filter | MTM86010 |
| Inlet QR Coupling | MTM73001 (To Tap) 3/4 Female (Nito) |
| Inlet QR Coupling | MTM73020 (To Tap) 3/4 Male (Nito) |
| Electrical Box on Storm | DEM101111 |

Preparation

Water Supply:

- a. Ensure there is an adequate water supply either from the mains or a reservoir.

NOTE: ONLY CLEAN FILTERED WATER SHOULD BE USED.

Hoses:

- a. Attach the high pressure hose to the pump connection.
- b. Attach the spray gun to opposite end of the high pressure hose.
- c. Ensure that the regulator nozzle on the end of the spray lance is **CLOSED**.

OPERATION

(Check that electric motor is switched '**OFF**')

- a. Plug into a suitable electrical source. (Not an extension lead)
- b. Turn on water supply.
- c. Ensure that the trigger is '**OPEN**' to vent air from the pump.
- d. Switch '**ON**' electric motor.
- e. Open regulator nozzle slightly and direct lance on surface to be cleaned. Press operating trigger.
- f. Adjust pressure regulator as required to obtain working pressure.
- g. NOTE: The high pressure water will cause the gun to 'kick'. Make sure you have a firm grip of the gun and lance.
- h. On completion of the operation switch '**OFF**' electric motor and unplug from power supply.
- i. Turn '**OFF**' water supply.
- j. Release residual pressure in gun and lance by operating trigger.

OPERATING HINTS

- a. During very cold weather it is most important to protect the machine against freezing. DO NOT operate machine should it become frozen. Move it to a warm area and allow to thaw naturally.
- b. Check all hoses and couplings for leaks, tighten where necessary.

WHEN USING CLEANING AGENTS

- a. Set machine up for water only.
- b. Connect detergent hose to machine and place filter end into detergent reservoir. Unscrew the adjustable nozzle on the end of the lance to reduce the pressure to 500psi. The chemical will now be automatically injected into the water.
- c. On completion of work, flush through hose and gun with clean water to remove any residual detergent.

SERVICING

The Storm range require little maintenance apart from checking the oil level at least every week and changing the oil should it turn white or it is six months old. If the oil turns white it is due only to water entering the pump via the dipstick, which has a breather hole drilled through. The design of the pump does not allow water from the pump to gain access to the gearbox drive.

Should the performance be reduced to a level where the jet is ineffective contact the service department to ascertain the correct remedial repair work.

If using sea water flush after use with fresh water and spray any 3 way valves with silicone spray to lubricate valve.

WARNING

Leaving the pressure washer on by-pass for prolonged periods without operating the lance will cause the water in the pump to heat up. This heat build up may damage the seals and valves in the pump.

OPERATING INSTRUCTIONS

SAFETY

- i. **A Residual Current Device (R.C.D.) or Earth Leakage Trip** must be used with this machine.
- ii. **Water at high pressure is dangerous and can cause serious injury. This machine is to be used with great caution.**
 - a. **NEVER** point the high pressure spray jet at any person, animal, glass or any other material which may shatter.
 - b. **PREVENT** any over-spray from injuring other people or damaging property.
 - c. **DO NOT** even try to use a pressure washer on machinery or electrical equipment that is connected in any way to the mains supply. (all switches in the off position, pull out all plugs and if possible remove fuses). Cover or seal electric motors and fittings to prevent entry of water.
 - d. **ALWAYS** when using machine:-
 - wear safety goggles and helmet or helmet with a visor.
 - wear waterproof clothing and gloves.
 - take particular care with detergents and chemicals.
 - e. **NEVER** attempt to disconnect any hose with pressure in it or allow the hose to be flattened or
 - f. **DO NOT** use a high pressure hose from a ladder. Use a platform tower or proper scaffolding.
 - g. **CHECK** that your supply voltage agrees with that shown on the machine.
 - h. Demon do not recommend the use of an extension lead using an extension lead will result in switch failure or motor damage. Demon strongly recommend the use of extension hoses as opposed to extension leads. Warranty claims for damaged switches and motors used on extension leads will not be allowed. Ask the service department if in doubt.
 - i. **DO ALL** you can to keep plugs and sockets in a dry place or covered to prevent entry of water.
 - j. Where a cable is found to be damaged, the power must be switched off and the plug removed before attempting to remove the equipment.



Step by Step Guide to...

Operating a Storm

1

OIL

Check oil using sight glass or dipstick.
Replenish as required.



WATER

Connect to mains water supply or a suction hose and filter



2

3

HOSE

Connect the high pressure hose to your Storm machine



TRIGGER

Attach trigger to high pressure hose



4

5

POWER

Unwind power lead and plug this into the mains



NB - Do not use an extension lead

TURN ON

Switch the machine on and begin operating



6

7

TURN OFF

When you are done with the machine turn the switch to off



POWER

Unplug and rewind the power lead



8

9

HOSE

Disconnect the high pressure hose from the machine



WATER

Disconnect from mains water supply



10



Step by Step Guide to...

Operating a Storm Wallmount

1

COVER

Open the cover by removing fastening bolts with a 8mm spanner or socket



OIL

Check pump oil using dip stick. Replenish as required

2

3

COVER

Close cover and refasten the bolts



POWER

Ensure water supply and mains are turned on

4

5

HOSE

Ensure the high pressure hose is connected the lance



TURN ON

Push button to start and begin to operate

6

7

TURN OFF

When you are done, to stop the machine press the same button



HOSE

Release any pressure in the hose by squeezing the trigger

8

Fault Finder

| FAULT | CAUSE | REMEDY |
|--|---|---|
| Machine stops suddenly Or will not start. | Blown fuse. | Check mains power supply, re- place fuse. Wait until unit cools down before resetting switch. |
| Sudden pressure loss. | Water supply failed. | Check water supply. |
| Low pressure | HP nozzle worn or unloader set Incorrectly. | Replace HP nozzle. Set unloader to correct setting. |
| Low pressure with noise and vibration. | Valves worn or blocked. Piston seals worn. Pump sucking air. | Clean/replace as required. Replace. Check water supply pipe and un- ions. |
| Pump will not by-pass. | Non return valve dirty or jammed. | Clean or replace. |
| Water drips from pump box. | Pump seals worn. | Replace. |
| Oil drips from pump bottom. | Oil seal worn. | Replace. |
| Oil is milky in colour. | Water ingress through oil filter plug. | Rinse pump out and replace oil. |
| IF IN DOUBT ASK—OUR ADVICE IS FREE AND CAN SAVE YOU MONEY | | |

I can't get the pressure to where it used to be — where do I start?



Well by now you should know to check the nozzle - assuming that is correct and you still have no or low pressure the golden rule is to connect the pump to the mains water supply - whichever machine you are testing start with a good mains feed.

1. With the gun and lance connected turn the tap on - can you see a leak? If so there is your problem, if water can leak out air can get in and the pump won't produce pressure - simple as that. (Leaks from underneath the pump are either worn seals or a cracked piston - strip to find out which.)

Remedy: Fix leak or replace seals or piston.

2. Check enough flow of water can get into the pump. Make sure all the filters are clean. The new Tempest hot water machines have a fine filter which will remove most solids. All Demon machines are now double filtered. Have you checked both of them?

Remedy: Strip and inspect filters.

3. There are no leak's what next? With the pump switched off pull the trigger, water will spray out. Keeping the trigger pulled switch the pump on, if the water spray does not improve the valves are the fault. Either worn out or dirty. Strip and inspect. (The high pressure hose will also vibrate on the ground.)

Remedy: Replace or clean valves.

4. The valves are OK there are no leaks but it still won't get up to pressure – what next? The unloader valve piston and seat are damaged or worn allowing some of the water to circulate around the cylinder head - strip and inspect, you will see any damage.

Remedy: Strip unloader and inspect - replace damaged parts.

5. My cold water pressure washer does not feel as powerful as it used to be but the pressure gauge shows the correct pressure. What causes this? The chemical pick-up has a nozzle of 1.8mm or 2.0mm size and can get partially blocked. This will allow some but not all of the water to flow to the lance.

Remedy: Strip and remove the blockage.

6. The pressure remains high even when I let go of the trigger and the engine or motor is struggling or stalling. The non- return valve in the unloader is damaged or jammed.

Remedy: Strip and clean or replace.

Demon Technical Support 01752 - 690690

Storm Cold Water Range General Arrangement



| | |
|--------------------------------|--------------------------------|
| Detergent Pipe | DEM10115 |
| Plug 13amp | DEM10180 |
| Contactor 30amp 110V | DEM10111 |
| Mini Contactor 16amp 240V | DEM10125 |
| L/P Inlet | MTM73001 Female Stepped Nipple |
| L/P Inlet | MTM73020 Male Nito |
| Capacitor 65mf | DEM10139 |
| Easy Start to water Inlet Pipe | DEM10321 |

Storm Cold with Hose Reel General Arrangement

Storm 1 Easy Start Valve

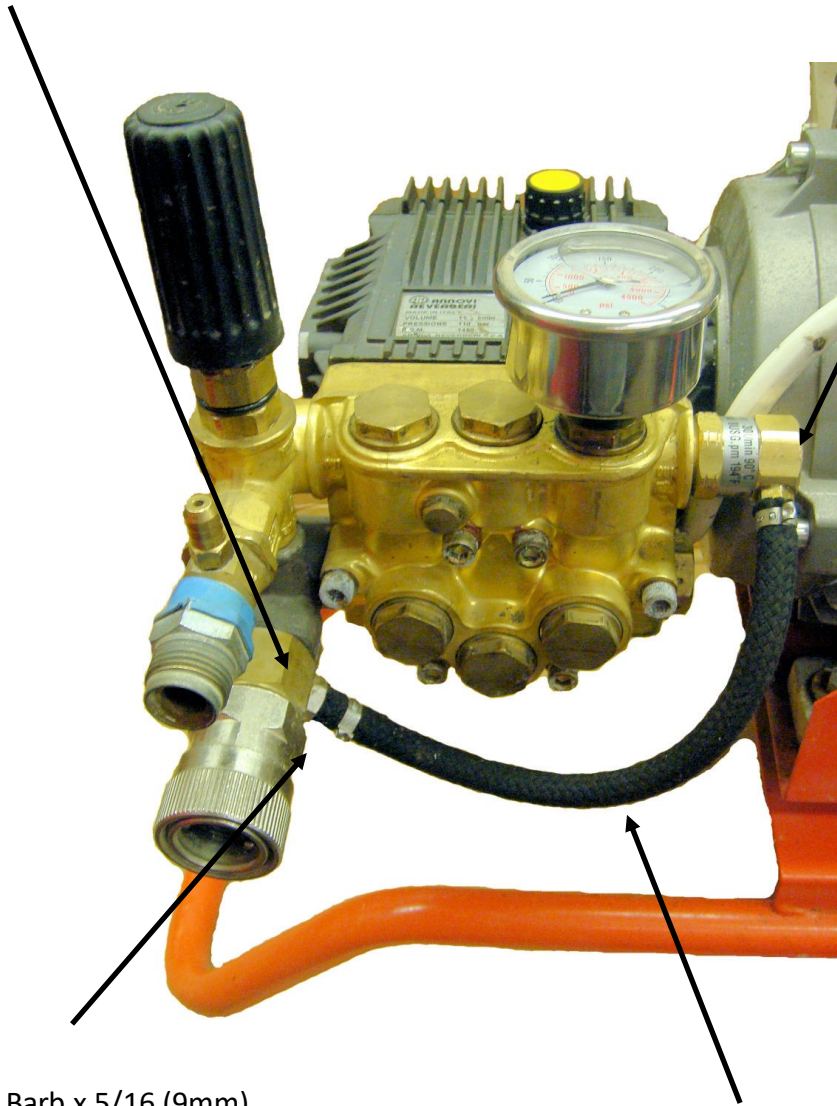
Bleed off Part 1 MTM00100

Bleed off Part 2 MTM00101

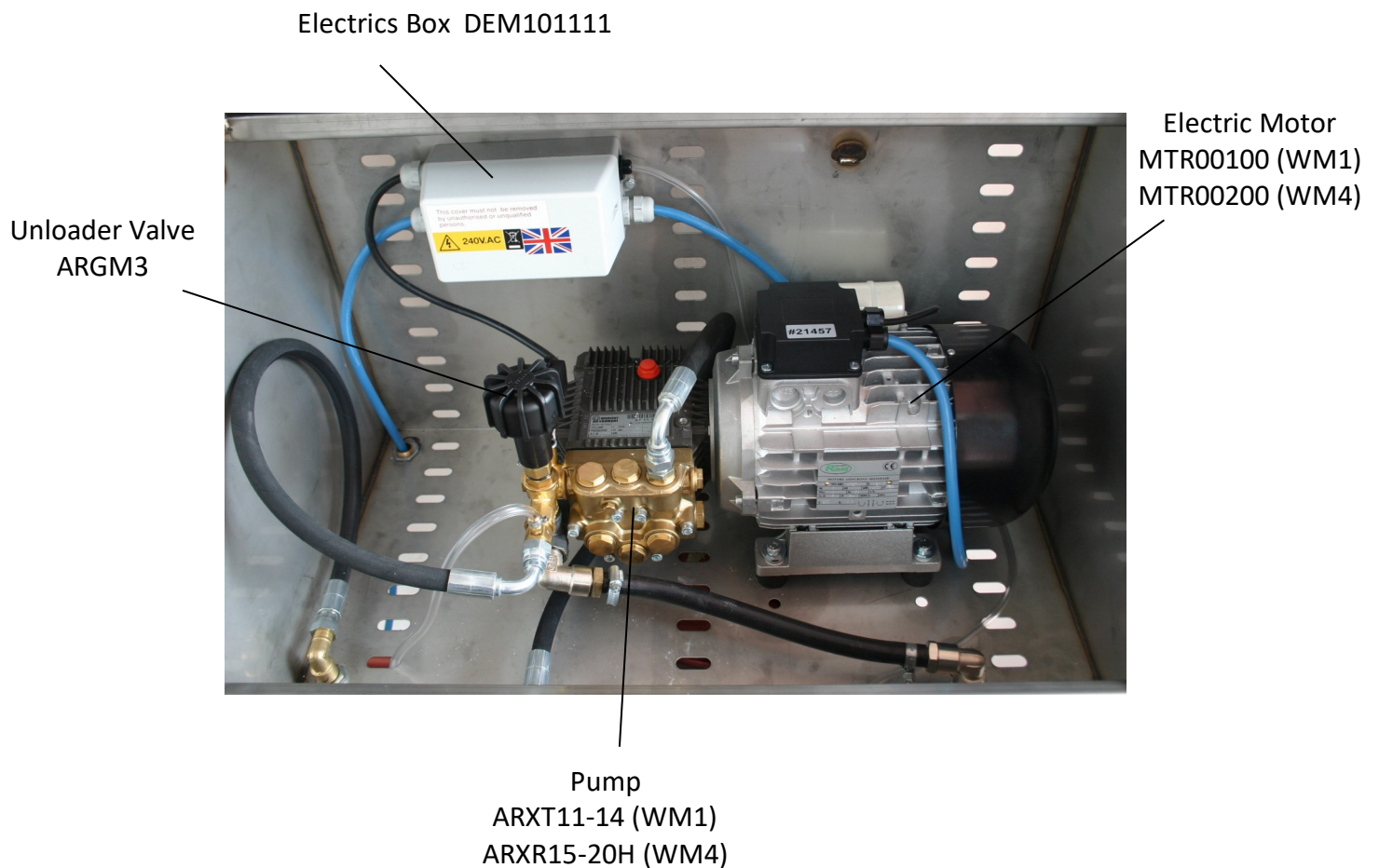
Easy Start Valve
MTM39001

1/8 Hose Barb x 5/16 (9mm)
DEM20401

Storm Easy Start to Water Inlet Pipe
DEM10321



Storm Wall Mounted General Arrangement



Demon Storm Twin Cabinet Washer



Demon Storm Twin Cabinet Washer

ON/OFF
SWITCH



N.B. If there is no water in the machine a light will still indicate power but will not be operational. CHECK WATER

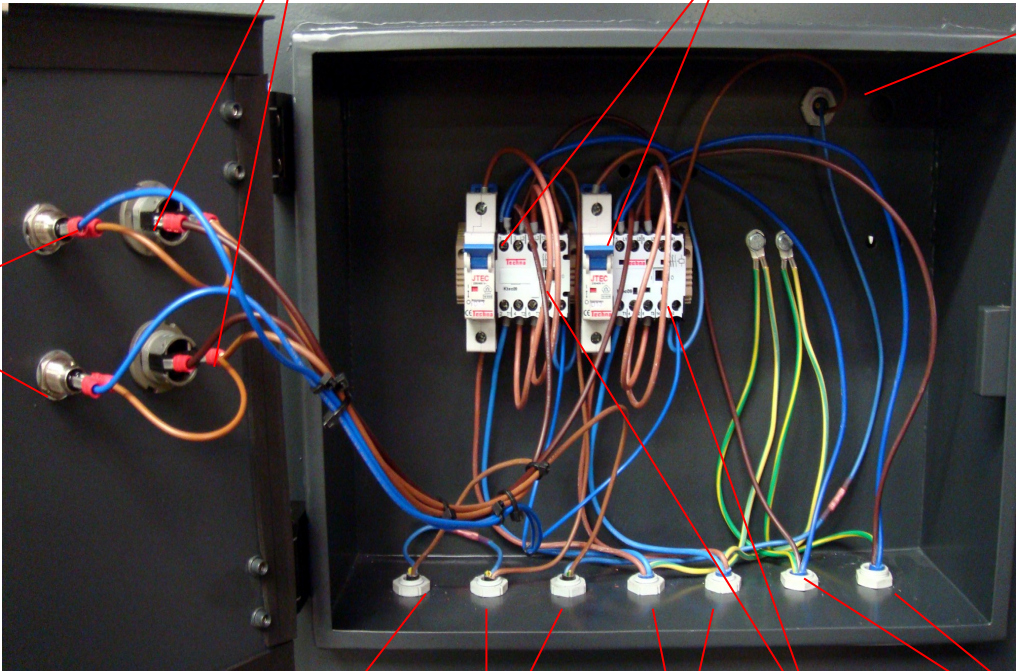
LED To indicate power in the machine

Rotary Switch

13 Amp MCB

Hi Float Low Water Sensor

LED'S



H Float Low water sensor

TSS Unloader Valve Supply

Motor Supply

240V Mini Contactor

Mains Supply

Warranty

This warranty covers the cost of all replacement parts and labour charges incurred. It does not cover the cost of transport or carriage. It is the owners responsibility to return the machine to a service depot or pay the travelling expenses of a service engineer to attend. Demon International's decision in warranty matters is final and binding.

Demon International Ltd undertake to repair or replace, any component which may fail due to a manufacturing fault within a period of 12 months from the date of purchase, provided that any fault or damage was not sustained by;

- A. Lack of regular and proper maintenance, user negligence, misuse, or damage caused by ice and frost.**
- B. The effects of contaminated fuel or water, the use of non-approved chemicals or an insufficient or unsuitable electrical supply.**
- C. The effects of un-authorised modification and use.**
- D. Compression damage to high pressure hose.(HOSES WARRANTED FOR 1 MONTH ONLY)**

Parts which may or may not wear out during the first year and which are considered service items which will need replacing from time to time: High pressure nozzle, lance, trigger, hoses, fuel nozzle, fuel filter, piston seals, valves, unloader seats and seals, water filter, non-return valve, chemical barbs, chemical pipes and pump oil seals.

It is the owners responsibility to ensure the Pressure Washer is kept in a safe and suitable environment and any faults reported by operatives to be rectified at the earliest possible date.

It is the operators responsibility to check the Pressure Washer for any faults and report them immediately. The Pressure Washer must be used in accordance with the manufacturers specifications and guidelines.

Demon International Ltd undertake to use the highest quality components available during manufacture, but cannot be held responsible for any undue consequence arising from the use of there Pressure Washer.

This warranty is given to the original purchaser only and is not transferable without the fully authorised and written consent of Demon International Ltd.

Warranty Procedure

End Users

If your machine develops a problem:

1. Phone Demon for advice with the model and serial number to hand.
2. Describe fully the problem as best you can.
3. If the problem cannot be resolved over the phone then the machine can be booked in for repair and if the faults are covered by the warranty the repair will be carried out free of charge.
4. If you cannot bring the machine in for repair then we will despatch an engineer. If the fault is covered by the warranty then we will not charge for labour or spares used, however the transport charge will be payable whether or not the repair is warranty.

Hire Centres and Dealers

If your machine develops a problem:

1. Phone Demon for advice with the model and serial number to hand.
2. Describe fully the problem.
3. We will advise you on the best course of action, however if parts are required you must raise a purchase order number to cover the parts. When the parts are fitted they must be returned for examination before a credit note is issued.
4. If you are unable to repair the machine then we will despatch an engineer to carry out the repair. We will need a purchase order to cover the cost of transport to and from the site and for parts and labour if the repair is not covered under the warranty.
5. If required Demon will arrange for a carrier to collect a damaged machine, if the warranty claim is valid we will pay this cost, if not it will be charged to the customer.

For parts warranty ring Demon and request a warranty claim form faxed to you. This form must accompany any returned parts.

Notes:

You will not invalidate the warranty by investigating faults and repairing them yourself providing you follow our advice. Hire Centres and Dealers are expected to carry out all repairs themselves with Demon crediting faulty parts upon receipt and inspection.

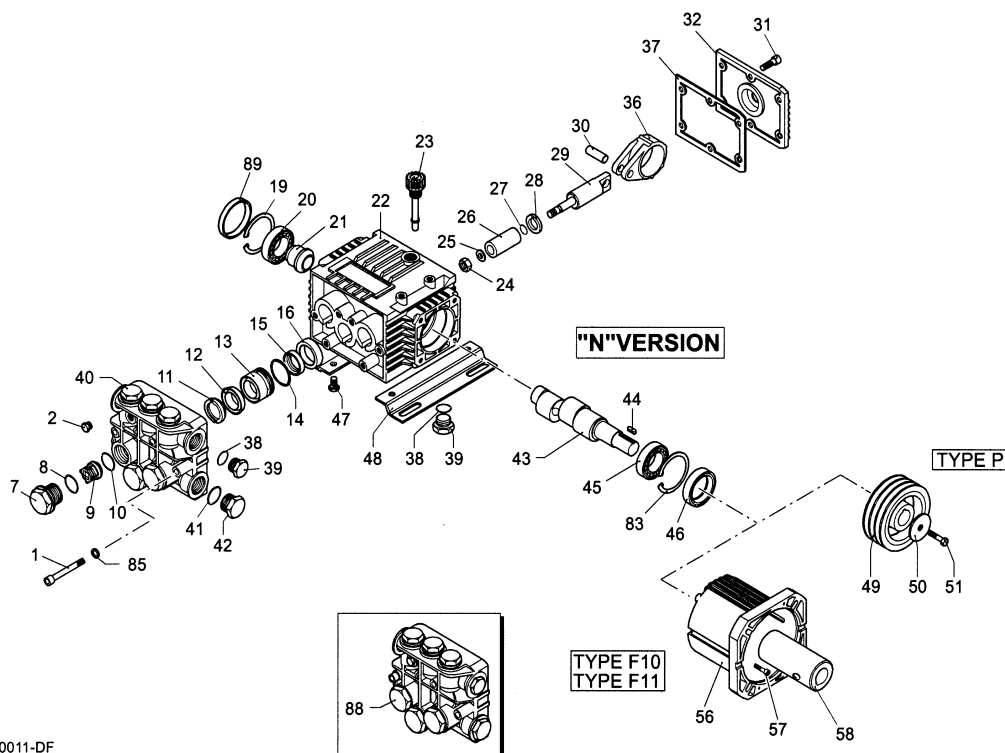
Spare parts fitted to machines are guaranteed for 1 month only or the remainder of the warranty period whichever is longer.

Pump XT 11.14 for Storm 1 & 2 and Storm Wallmounted/Twin Cabinet 1

Complete Pump: ARXT-11-14

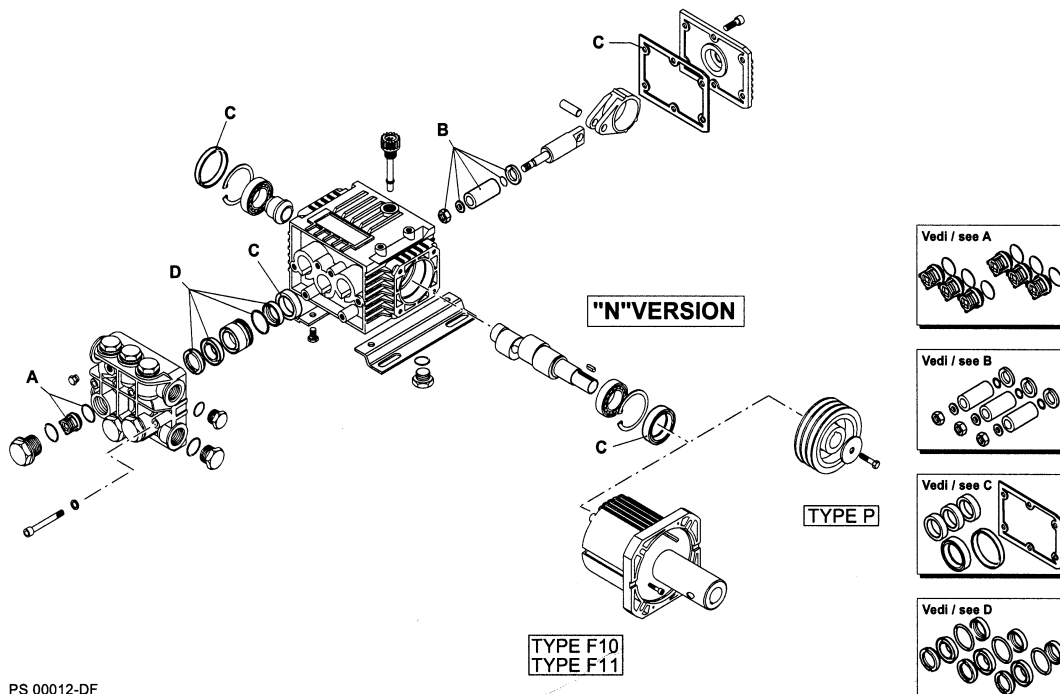
XT

VERSION **N** 1450 RPM



PS 00011-DF

KIT RICAMBI / PART KITS



PS 00012-DF

Pump XT 11.14 for Storm 1 & 2 and Storm Wallmounted/Twin Cabinet 1

Complete Pump: ARXT-11-14

| XT 1450 | | | | | | | |
|---------|-----------|----------------|-----|-----|-----------|-------------------|-----|
| Pos | Code No | Description | Qty | Pos | Code No | Description | Qty |
| 1 | AR680570 | Screw | 6 | 40 | AR1320020 | Pump Head | 1 |
| 2 | AR620301 | Plug | 1 | 41 | AR180101 | O Ring | 1 |
| 7 | AR1260162 | Plug | 6 | 42 | AR820361 | Plug | 1 |
| 8 | AR960160 | O Ring | 6 | 43 | AR1260200 | Crankshaft | 1 |
| 9 | AR1269050 | Complete Valve | 6 | 43 | AR1320260 | Crankshaft | 1 |
| 10 | AR880830 | O Ring | 6 | 44 | AR1380520 | Key | 1 |
| 11 | AR1320340 | Support Ring | 3 | 45 | AR1320370 | Bearing | 1 |
| 12 | AR1260220 | Gasket | 3 | 46 | AR1260750 | Seal | 1 |
| 13 | AR1320351 | Piston Guide | 3 | 47 | AR1260470 | Screw | 4 |
| 14 | AR1260420 | O Ring | 3 | 48 | AR1263890 | Base | 2 |
| 15 | AR1260450 | Gasket | 3 | 83 | AR1260790 | Circlip | 1 |
| 16 | AR1260460 | Seal | 3 | 85 | AR1381550 | Washer | 6 |
| 19 | AR1260790 | Circlip | 1 | 88 | AR1269222 | Pump Head pre-ass | 1 |
| 20 | AR1320370 | Bearing | 1 | 89 | AR1266740 | Cap | 1 |
| 21 | AR1320330 | Bushing | 1 | | | | |
| 22 | AR1320010 | Pump Housing | 1 | | | | |
| 23 | AR880130 | Oil Plug | 1 | | | | |
| 24 | AR1260110 | Nut | 3 | | | | |
| 25 | AR1260100 | Washer | 3 | | | | |
| 26 | AR1260210 | Piston | 3 | | | | |
| 27 | AR480480 | O Ring | 3 | | | | |
| 28 | AR1260091 | Spacer | 3 | | | | |
| 29 | AR1260070 | Guiding Piston | 3 | | | | |
| 30 | AR1260080 | Piston Pin | 3 | | | | |
| 31 | AR1260760 | Screw | 6 | | | | |
| 32 | AR1269101 | Complete Cover | 1 | | | | |
| 32 | AR1320910 | Complete Cover | 1 | | | | |
| 36 | AR1260060 | Con Road | 3 | | | | |
| 36 | AR1320140 | Con Road | 3 | | | | |
| 37 | AR1260040 | Gasket | 1 | | | | |
| 38 | AR740290 | O Ring | 2 | | | | |
| 39 | AR1980740 | Plug | 2 | | | | |

| ARKIT1864 | | ARKIT2629 | | ARKIT1872 | |
|-----------|-----|------------|-----|--------------|-----|
| Valve Kit | | Piston Kit | | Oil Seal Kit | |
| Pos | Qty | Pos | Qty | Pos | Qty |
| 9 | 6 | 24 | 3 | 16 | 3 |
| 10 | 6 | 25 | 3 | 37 | 1 |
| | | 26 | 3 | 46 | 1 |
| | | 27 | 3 | 89 | 1 |
| | | 28 | 3 | | |

| ARKIT1874 | |
|-------------|---|
| Water Seals | |
| 11 | 3 |
| 12 | 3 |
| 14 | 3 |
| 15 | 3 |

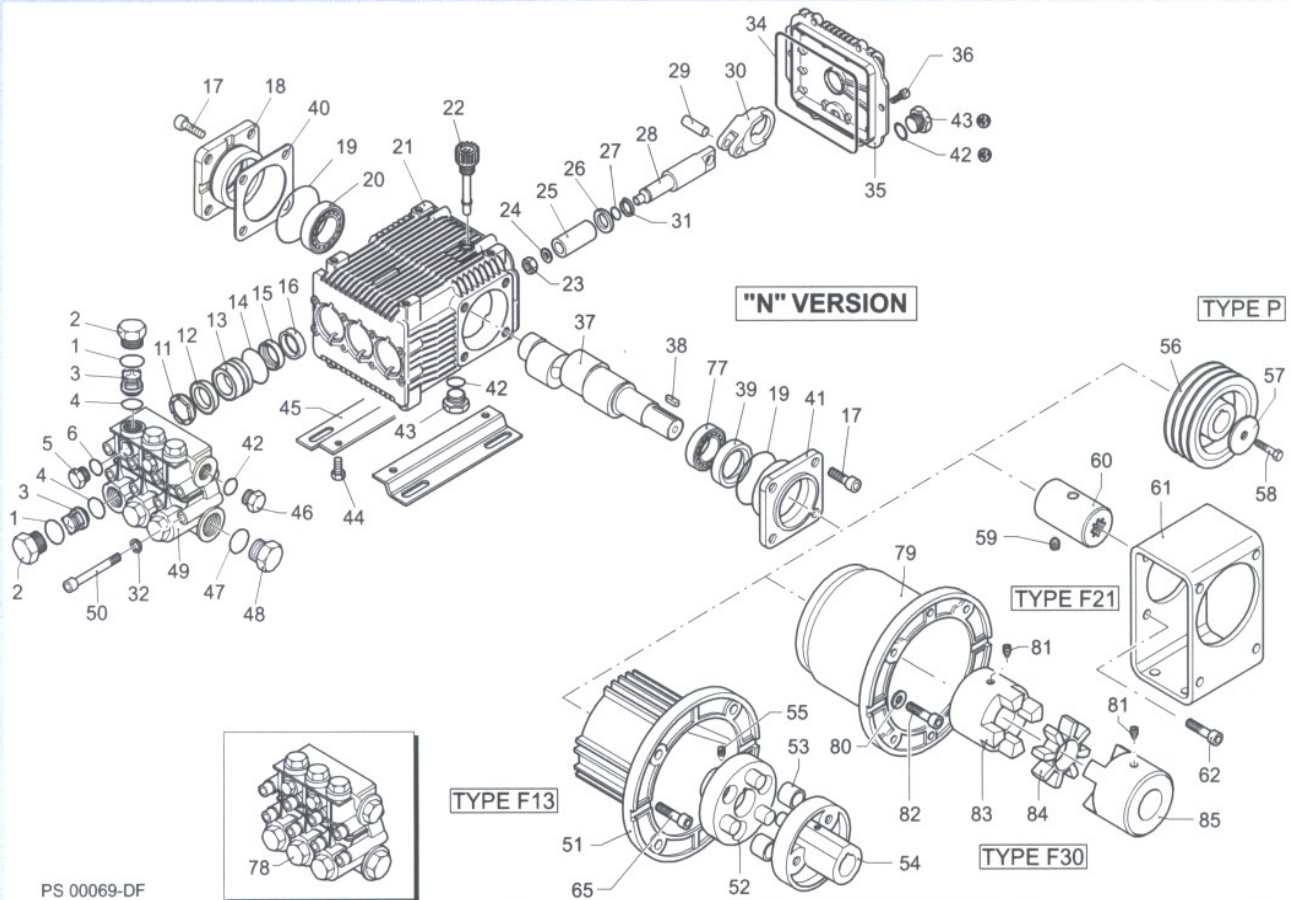
Pump RK 15.20 for Storm Wallmounted/Twin Cabinet 4
Complete Pump: ARXR15-20H

RK

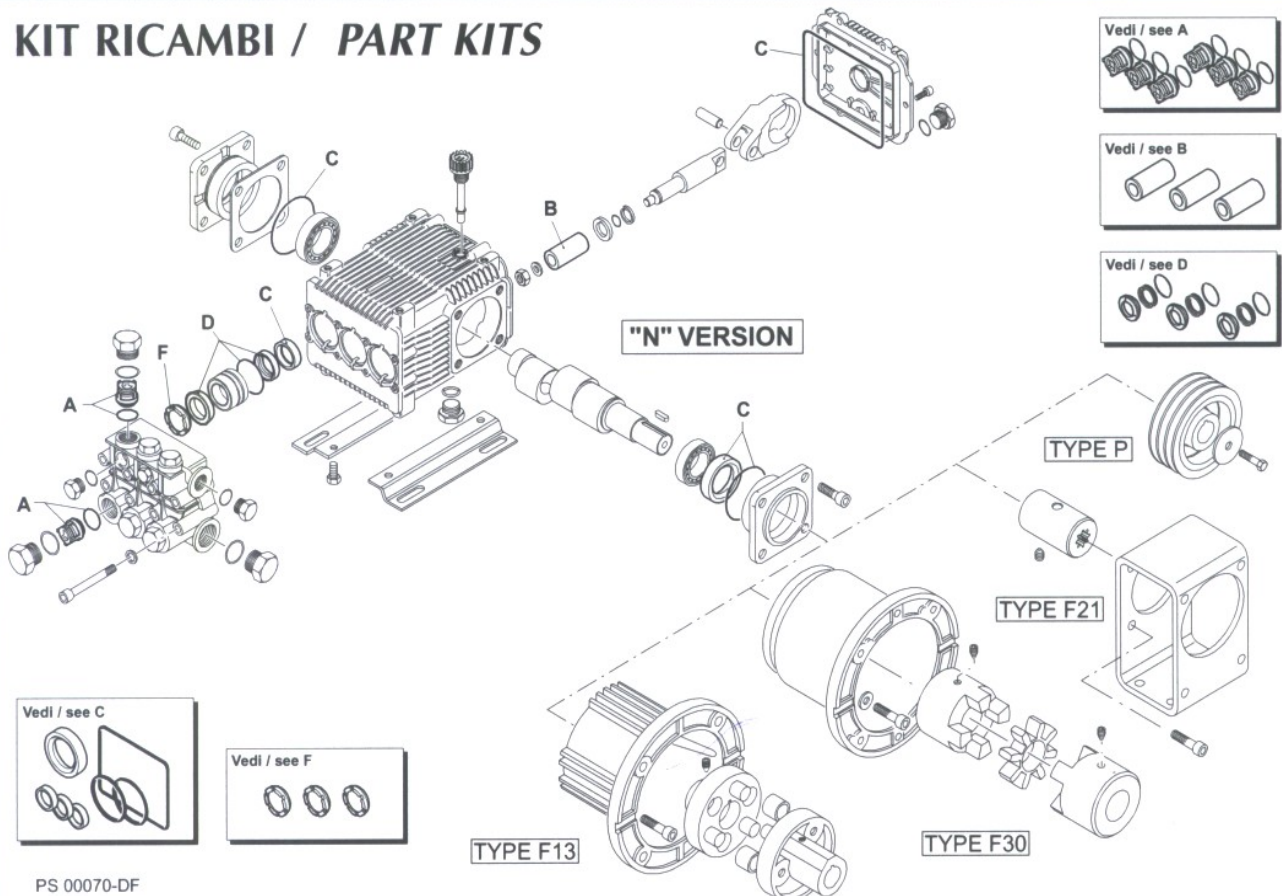
VERSION

N

1450 RPM



KIT RICAMBI / PART KITS



Pump RK 15.20 for Storm Wallmounted/Twin Cabinet 4

Complete Pump: ARXR15-20H

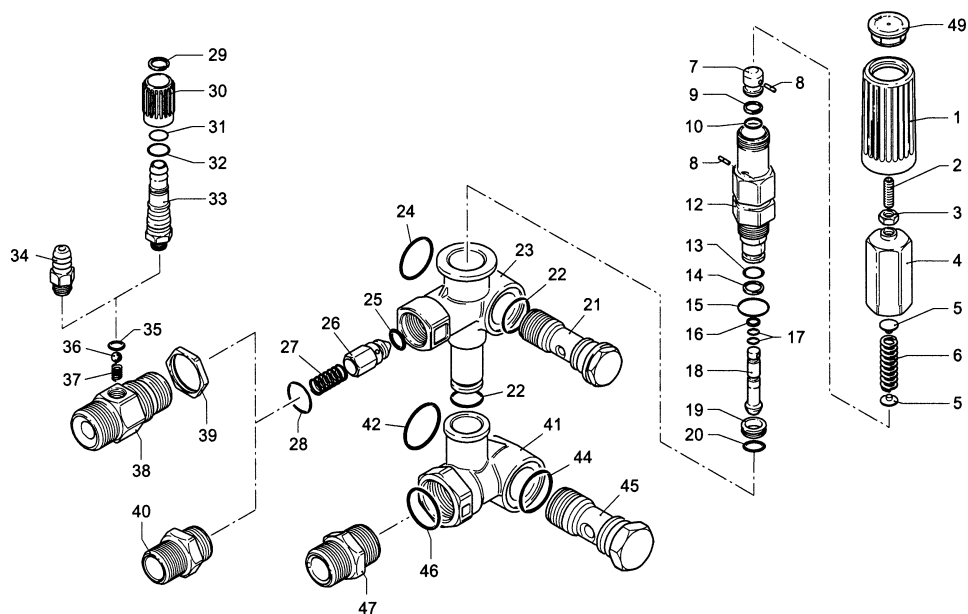
| RK MODEL: RK 13-17 / RK 15-20H / RK21-15 | | | | | | | |
|--|-----------|--------------------|-----|-----|-----------|------------------------------------|-----|
| Pos | Part No | Description | Qty | Pos | Part No | Description | Qty |
| 1 | AR960160 | O Ring | 6 | 36 | AR1343510 | Screw | 6 |
| 2 | AR960090 | Plug | 6 | 40 | AR1380120 | 0.10mm shim | 1÷3 |
| 2 | AR1380740 | Plug | 6 | 40 | AR1380130 | 0.20mm shim | 1÷3 |
| 3 | AR1389051 | Complete Valve | 6 | 40 | AR1380530 | 0.25mm shim | 1÷3 |
| 4 | AR880830 | O Ring | 6 | 40 | AR1382810 | 0.05mm shim | 1÷3 |
| 5 | AR880581 | Plug | 2 | 42 | AR740290 | O ring | 3 |
| 6 | AR820510 | O Ring | 2 | 43 | AR1980740 | ³ / ₈ G plug | 2 |
| 11 | AR960110 | Support Ring | 3 | 44 | AR1260470 | Screw | 4 |
| 12 | AR880320 | Gasket | 3 | 45 | AR1380141 | Base | 2 |
| 13 | AR1380090 | Piston Guide | 3 | 46 | AR1980740 | ³ / ₈ G Plug | 1 |
| 14 | AR961240 | O Ring | 3 | 46 | AR1981180 | ³ / ₈ G Plug | 1 |
| 15 | AR880330 | Gasket | 3 | 47 | AR180101 | O Ring | 1 |
| 16 | AR138130 | Seal | 3 | 48 | AR820361 | Plug | 1 |
| 17 | AR850370 | Screw | 8 | 48 | AR960870 | Plug | 1 |
| 18 | AR1380050 | Closed Bearing sup | 1 | 49 | AR1381070 | Pump head | 1 |
| 19 | AR640030 | O Ring | 1 | 50 | AR820150 | Screw | 8 |
| 20 | AR2280240 | Bearing | 1 | 60 | AR1380320 | Bearing | 1 |
| 21 | AR1382770 | Pump Housing | 1 | 61 | AR621170 | Seal | 1 |
| 22 | AR880130 | Oil Cap | 1 | 62 | AR1380220 | O Ring | 1 |
| 23 | AR962010 | Nut | 3 | 63 | AR1380210 | Shaft cover | 1 |
| 24 | AR962000 | Washer | 3 | 66 | AR2280180 | Hollow Shaft 28mm | 1 |
| 24 | AR1380940 | Ceramic Piston | 3 | 66 | AR2280170 | Hollow Shaft 028mm | 1 |
| 26 | AR1380950 | Spacer | 3 | 66 | AR2280160 | Hollow Shaft 028mm | 1 |
| 27 | AR600180 | O ring | 3 | 66 | AR2280150 | Hollow Shaft 028mm | 1 |
| 28 | AR1380920 | Guiding Piston | 3 | 67 | AR1380370 | El Motor flange | 1 |
| 29 | AR1380060 | Piston Pin | 3 | 76 | AR620610 | Screw | 4 |
| 30 | AR1383050 | Aluminium con-rod | 3 | 78 | AR1389272 | Pump head Ass | 1 |
| 31 | AR1080401 | Ring | 3 | 86 | AR1260250 | Oil Indicator | 1 |
| 32 | AR1381850 | Washer | 8 | 87 | AR1260430 | Snap Ring | 1 |
| 34 | AR1780510 | O Ring | 1 | 88 | AR1780690 | Disc | 1 |
| 35 | AR1789010 | Complete cover | 1 | 89 | AR1140450 | O Ring | 1 |

| Valve Kit | | Piston Kit | | Oil Seal Kit | |
|-----------|-----|------------|-----|--------------|-----|
| ARKIT1828 | | ARKIT2757 | | ARKIT1856 | |
| Pos | Qty | Pos | Qty | Pos | Qty |
| 3 | 6 | 25 | 3 | 16 | 3 |
| 4 | 6 | | | 19 | 1 |
| | | | | 34 | 1 |
| | | | | 61 | 1 |
| | | | | 62 | 1 |

| Water Seal | | Support Ring | |
|------------|-----|--------------|-----|
| ARKIT1857 | | ARKIT1829 | |
| Pos | Qty | Pos | Qty |
| 12 | 3 | 11 | 3 |
| 14 | 3 | | |
| 15 | 3 | | |

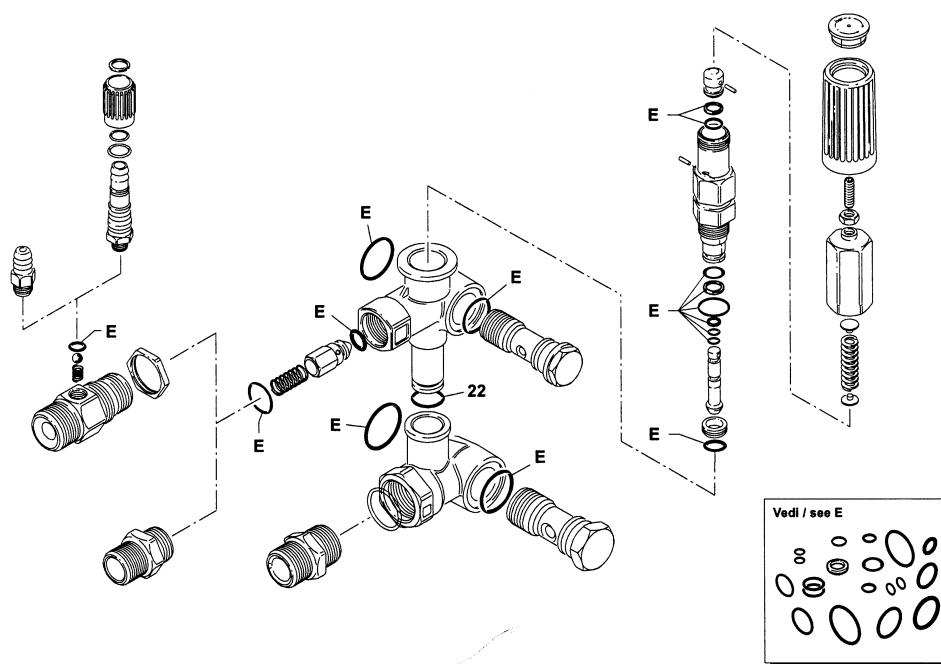
Unloader for Storm 1 & 2 without Hose Reel
Complete Unloader: ARMM4B/C

MINIMATIC 4/B



UN000186-HF

KIT RICAMBI / PART KITS



UN000187-HF

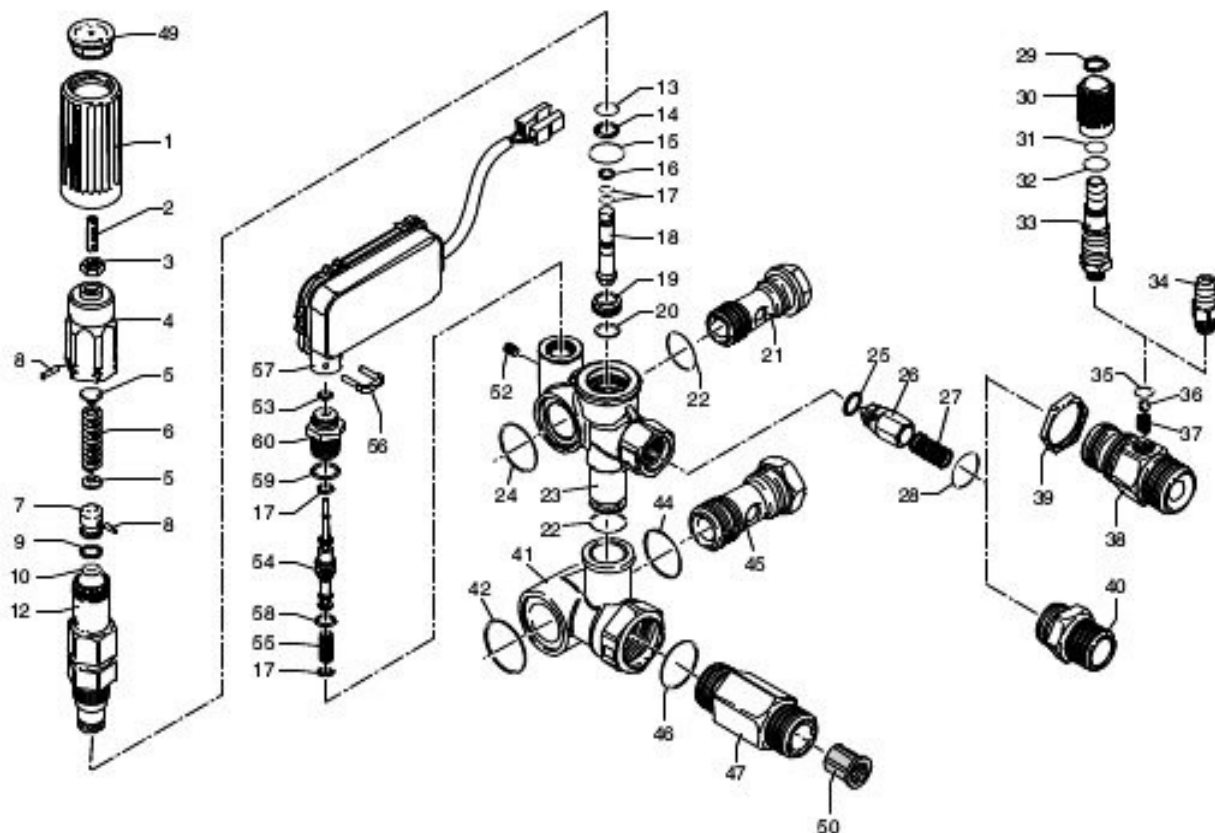
Unloader for Storm 1 & 2 without Hose Reel
Complete Unloader: ARMM4B/C

| MINIMATIC 4/B | | | | | | | |
|---------------|-----------|--------------------------|-----|-----|-----------|---------------------------|-----|
| Pos | Part No | Description | Qty | Pos | Part No | Description | Qty |
| 1 | AR1981780 | Handle | 1 | 40 | AR1540180 | Adaptor $\frac{3}{8}$ G | 1 |
| 2 | AR1540560 | Grub | 1 | 40 | AR1540500 | Adaptor $\frac{3}{8}$ NPT | 1 |
| 3 | AR1980300 | Nut | 1 | 41 | AR1540280 | By pass housing | 1 |
| 4 | AR1980390 | Knob Insert | 1 | 41 | AR1540480 | By pass housing | 1 |
| 5 | AR1980220 | Spring Plate | 2 | 42 | AR1540630 | O Ring | 1 |
| 6 | AR1271070 | Spring | 1 | 44 | AR880270 | O Ring | 1 |
| 7 | AR1080041 | Upper Piston | 1 | 45 | AR1540260 | Thread Screw | 1 |
| 8 | AR1080070 | Pin | 2 | 46 | AR480440 | O Ring | 1 |
| 9 | AR1080401 | Back up Pin | 1 | 47 | AR1540050 | Fitting | 1 |
| 10 | AR1080250 | O ring | 1 | 49 | AR1981770 | Knob Plug | 1 |
| 12 | AR1980210 | Piston Guide | 1 | | | | |
| 13 | AR740290 | O Ring | 1 | | | | |
| 14 | AR800560 | O Ring | 1 | | | | |
| 15 | AR880830 | O Ring | 1 | | | | |
| 16 | AR1271170 | Back up Ring | 1 | | | | |
| 17 | AR1080190 | O Ring | 2 | | | | |
| 18 | AR1271160 | Lower Piston | 1 | | | | |
| 19 | AR1980200 | Valve Seat | 1 | | | | |
| 20 | AR1470210 | O Ring | 1 | | | | |
| 21 | AR1540270 | Thread Screw | 1 | | | | |
| 21 | AR1540430 | Thread Screw | 1 | | | | |
| 22 | AR390080 | O Ring | 2 | | | | |
| 23 | AR1540510 | Valve housing | 1 | | | | |
| 24 | AR1140450 | O Ring | 1 | | | | |
| 25 | AR1460430 | O Ring | 1 | | | | |
| 26 | AR1540170 | Jet | 1 | | | | |
| 27 | AR1080091 | Spring | 1 | | | | |
| 28 | AR394280 | O Ring | 1 | | | | |
| 29 | AR1560660 | Ring | 1 | | | | |
| 30 | AR1560680 | Detergent Reg Knob | 1 | | | | |
| 31 | AR480560 | O Ring | 1 | | | | |
| 32 | AR800560 | O Ring | 1 | | | | |
| 33 | AR1560650 | Hose tail | 1 | | | | |
| 34 | AR1560490 | Hose tail | 1 | | | | |
| 35 | AR480480 | O Ring | 1 | | | | |
| 36 | AR1250280 | Ball | 1 | | | | |
| 37 | AR1560520 | Spring | 1 | | | | |
| 38 | AR1540580 | Fitting $\frac{3}{8}$ /G | 1 | | | | |
| 39 | AR1540300 | Nut | 1 | | | | |

| ARKIT 2812 | | | | | |
|------------|-----|-----|-----|-----|-----|
| Pos | Qty | Pos | Qty | Pos | Qty |
| 9 | 1 | 17 | 2 | 35 | 1 |
| 10 | 1 | 20 | 1 | 42 | 1 |
| 13 | 1 | 22 | 2 | 44 | 1 |
| 14 | 1 | 24 | 1 | | |
| 15 | 1 | 25 | 1 | | |
| 16 | 1 | 28 | 1 | | |

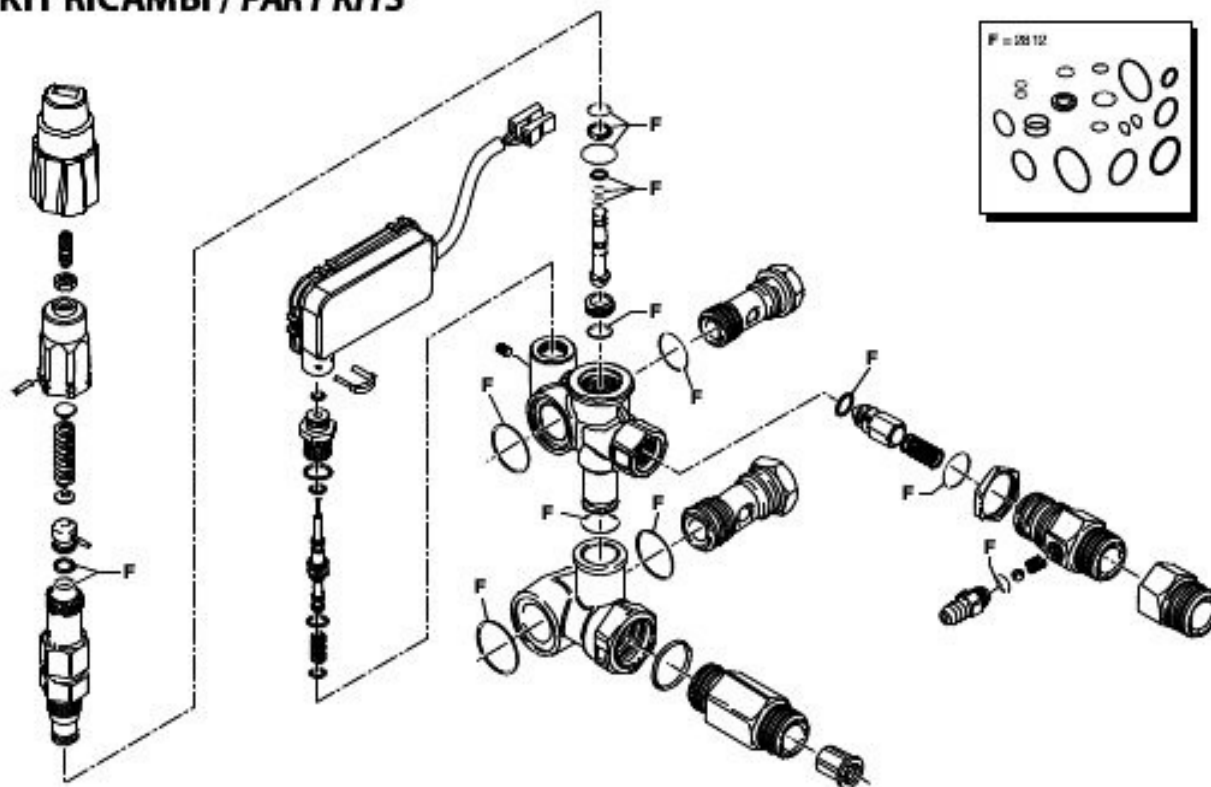
Unloader for PRE 2013 Storm Wallmount
Complete Unloader: ARMM4B/TSS

MINIMATIC 4/B TSS



UN002257-4A

KIT RICAMBI / PART KITS



UN002258-4A

Unloader for PRE 2013 Storm Wallmount
Complete Unloader: ARMM4B/TSS

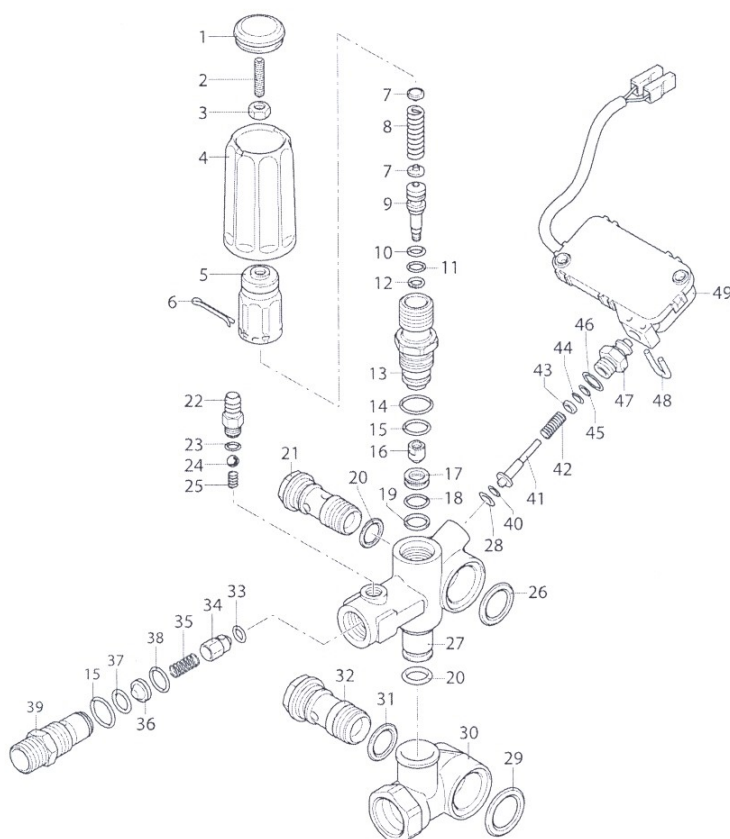
| MINIMATIC 4/B TSS | | | | | | | |
|-------------------|-----------|-------------------------|-----|-----|-----------|---------------------------|-----|
| Pos | Part No | Description | Qty | Pos | Part No | Description | Qty |
| 1 | AR1981780 | Knob extension | 1 | 40 | AR1540180 | Adaptor $\frac{3}{8}$ G | 1 |
| 2 | AR392840 | Grub screw | 1 | 40 | AR1540500 | Adaptor $\frac{3}{8}$ NPT | 1 |
| 3 | AR1980300 | Nut | 1 | 41 | AR1540280 | By pass housing | 1 |
| 4 | AR2500400 | Knob insert | 1 | 42 | AR1540630 | O RING | 1 |
| 5 | AR1980220 | Spring plate | 2 | 44 | AR880270 | O RING | 1 |
| 6 | AR1271070 | Spring | 1 | 45 | AR1540260 | Screw | 1 |
| 7 | AR1080041 | Upper piston | 1 | 46 | AR480440 | O ring | 1 |
| 8 | AR1080070 | Pin | 2 | 47 | AR1560600 | Suction fitting | 1 |
| 9 | AR1080401 | Back Up Ring | 1 | 49 | AR1981770 | Knob plug | 1 |
| 10 | AR1080250 | O Ring | 1 | 50 | AR1340260 | Water suction filter | 1 |
| 12 | AR1980210 | Piston Guide | 1 | 52 | AR1981190 | Grub screw | 1 |
| 13 | AR740290 | O ring | 1 | 53 | AR1260820 | O ring | 1 |
| 14 | AR800560 | O ring | 1 | 54 | AR1540880 | TSS piston | 1 |
| 15 | AR880830 | O ring | 1 | 55 | AR1981320 | Spring | 1 |
| 16 | AR1271170 | Back up ring | 1 | 56 | AR2022200 | Clip | 1 |
| 17 | AR1080190 | O ring | 2 | 57 | AR2029753 | TSS assembly | 1 |
| 18 | AR1271160 | Lower piston | 1 | 58 | AR660190 | O ring | 1 |
| 19 | AR1980200 | Valve seat | 1 | 59 | AR880840 | O ring | 1 |
| 20 | AR1470210 | O ring | 1 | 60 | AR1540870 | TSS fitting | 1 |
| 21 | AR1540270 | Thread screw | 1 | | | | |
| 22 | AR390080 | O ring | 2 | | | | |
| 23 | AR1540660 | Valve housing | 1 | | | | |
| 24 | AR1140450 | O ring | 1 | | | | |
| 25 | AR1460430 | O ring | 1 | | | | |
| 26 | AR1540170 | Jet | 1 | | | | |
| 27 | AR1080091 | Ball Spring | 1 | | | | |
| 28 | AR394280 | O ring | 1 | | | | |
| 29 | AR1560660 | Ring | 1 | | | | |
| 30 | AR1560680 | Detergent reg knob | 1 | | | | |
| 31 | AR480560 | O ring | 1 | | | | |
| 32 | AR800560 | O ring | 1 | | | | |
| 33 | AR1560650 | Hose tail | 1 | | | | |
| 34 | AR1560490 | Hose tail | 1 | | | | |
| 35 | AR480480 | O ring | 1 | | | | |
| 36 | AR1250280 | Ball | 1 | | | | |
| 37 | AR1560520 | Spring | 1 | | | | |
| 38 | AR1540580 | Fitting $\frac{3}{8}$ G | 1 | | | | |
| 39 | AR1540300 | Nut | 1 | | | | |

| ARKIT 2812 | | | | | |
|------------|-----|-----|-----|-----|-----|
| O Rings | | | | | |
| Pos | Qty | Pos | Qty | Pos | Qty |
| 9 | 1 | 17 | 2 | 35 | 1 |
| 10 | 1 | 20 | 1 | 42 | 1 |
| 13 | 1 | 22 | 2 | 44 | 1 |
| 14 | 1 | 24 | 1 | | |
| 15 | 1 | 25 | 1 | | |
| 16 | 1 | 28 | 1 | | |

Unloader for Storm with Hose Reel & Storm Wallmounted/Twin Cabinet 1 Complete Unloader: ARGM3

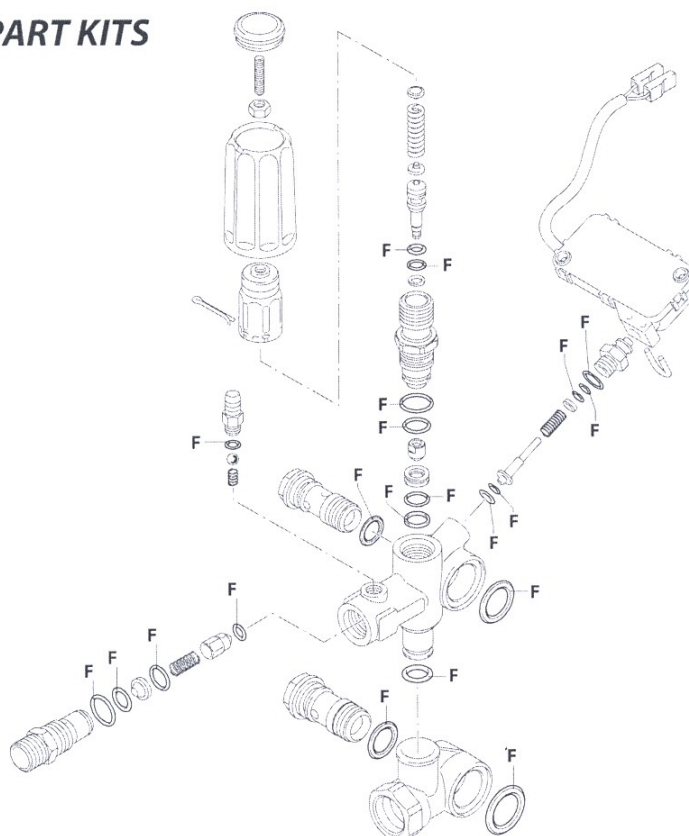
VRZ TSS + ID

200 bar



UN003611-AS

KIT RICAMBI / PART KITS

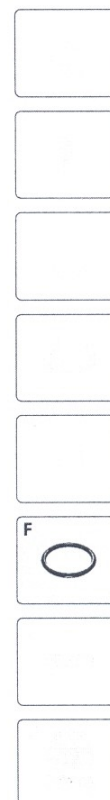


(3748600)

UN003612-AS

341

sp_40005_VRZ_TSS



Unloader for Storm with Hose Reel & Storm Wallmounted/Twin Cabinet 1
Complete Unloader: ARGM3

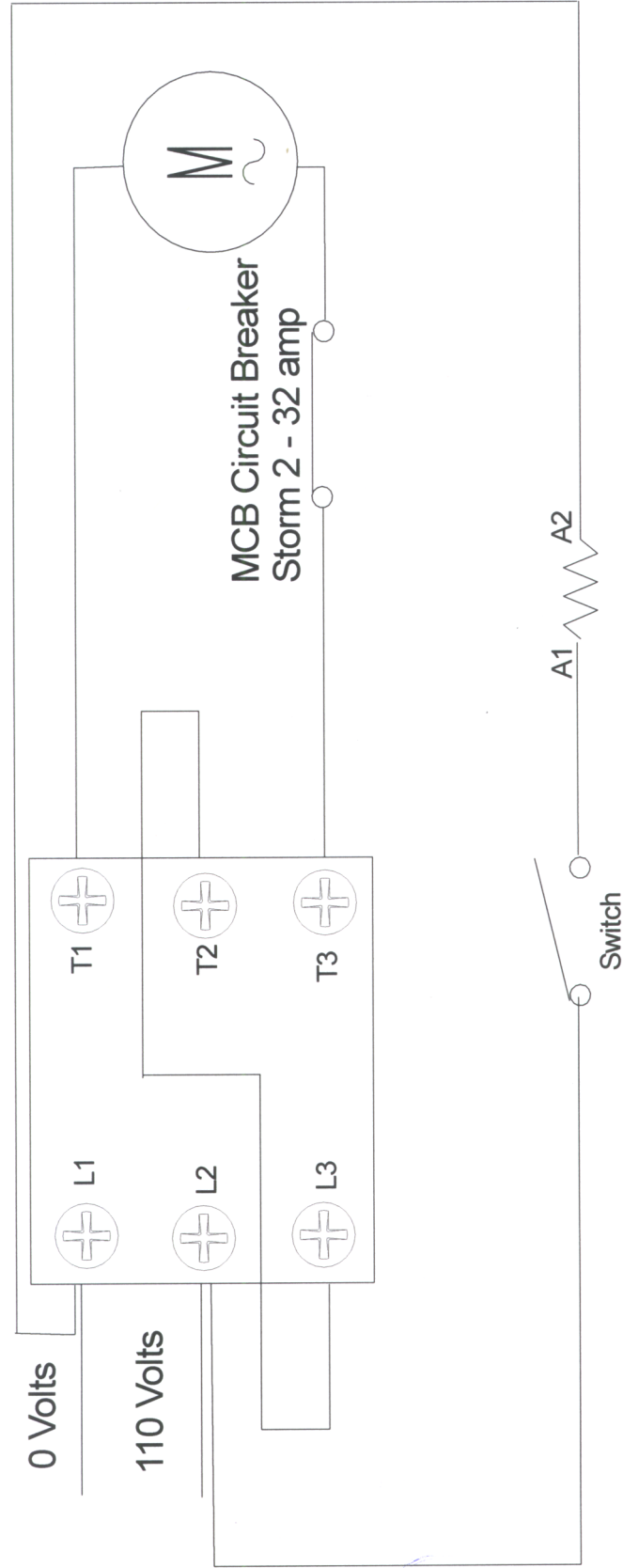
VRZ TSS

| POS | Part No | Description | Qty | Pos | Part No | Description | Qty |
|-----|-----------|--------------|-----|-----|------------|------------------|-----|
| 1 | AR3200500 | Plug | 1 | 40 | AR2260480 | Ring | 1 |
| 2 | AR2840970 | Screw | 1 | 41 | AR2260470 | Pin | 1 |
| 3 | AR1060120 | Nut | 1 | 42 | AR2260460 | Spring | 1 |
| 4 | AR3740030 | Knob | 1 | 43 | AR2021650 | Washer | 1 |
| 5 | AR2500540 | Insert | 1 | 44 | AR1260821 | O-ring | 1 |
| 6 | AR2500550 | Split pin | 1 | 45 | AR3740050 | Ring | 1 |
| 7 | AR1980220 | Wobble plate | 2 | 46 | AR600180 | O-ring | 1 |
| 8 | AR2760410 | Spring | 1 | 47 | AR3740040 | Fitting | 1 |
| 9 | AR2760400 | Piston | 1 | 48 | AR2022201 | Fork | 1 |
| 10 | AR2260100 | O-ring | 1 | 49 | AR2029752 | TSS box assembly | 1 |
| 11 | AR660190 | O-ring | 1 | 50 | AR2029752A | Micro switch | 1 |
| 12 | AR2760210 | Ring | 1 | | | | |
| 13 | AR2760570 | Guide | 1 | | | | |
| 14 | AR1200690 | O-ring | 1 | | | | |
| 15 | AR394280 | O-ring | 5 | | | | |
| 16 | AR2260070 | Shutter | 1 | | | | |
| 17 | AR2760980 | Seat | 1 | | | | |
| 18 | AR770140 | O-ring | 1 | | | | |
| 19 | AR2760640 | Ring | 1 | | | | |
| 20 | AR390080 | O-ring | 2 | | | | |
| 21 | AR1540272 | Screw | 1 | | | | |
| 22 | AR1982520 | Hose tail | 1 | | | | |
| 23 | AR480480 | O-ring | 1 | | | | |
| 24 | AR1250280 | Ball | 1 | | | | |
| 25 | AR1560520 | Spring | 1 | | | | |
| 26 | AR2260190 | O-ring | 1 | | | | |
| 27 | AR3740010 | Valve body | 1 | | | | |
| 28 | AR1120681 | O-ring | 1 | | | | |
| 29 | AR1540630 | O-ring | 1 | | | | |
| 30 | AR3740020 | Body | 1 | | | | |
| 31 | AR880270 | O-ring | 1 | | | | |
| 32 | AR2260420 | Screw | 1 | | | | |
| 33 | AR2101770 | O-ring | 1 | | | | |
| 34 | AR2760131 | Shutter | 1 | | | | |
| 35 | AR2760200 | Spring | 1 | | | | |
| 36 | AR2760120 | Insert | 1 | | | | |
| 37 | AR1470210 | O-ring | 1 | | | | |
| 38 | AR2760270 | O-ring | 1 | | | | |
| 39 | AR2760230 | Injector | 1 | | | | |

| F= Kit42780 O-Rings | | | | | |
|------------------------|-----|-----|-----|-----|-----|
| Pos | Qty | Pos | Qty | Pos | Qty |
| 10 | 1 | 23 | 2 | 38 | 1 |
| 11 | 1 | 26 | 1 | 44 | 1 |
| 14 | 1 | 28 | 1 | 45 | 1 |
| 15 | 5 | 29 | 1 | 46 | 1 |
| 18 | 1 | 31 | 1 | | |
| 19 | 1 | 33 | 1 | | |
| 20 | 2 | 37 | 1 | | |

| ARKIT 2223 VRZ Auto Repair Kit | | | |
|-----------------------------------|-----|-----|-----|
| Pos | Qty | Pos | Qty |
| 28 | 1 | 44 | 1 |
| 40 | 1 | 45 | 1 |
| 41 | 1 | 46 | 1 |
| 42 | 1 | 47 | 1 |
| 43 | 1 | 50 | 1 |

Storm 2 32 amp Contactor with 32 amp MCB



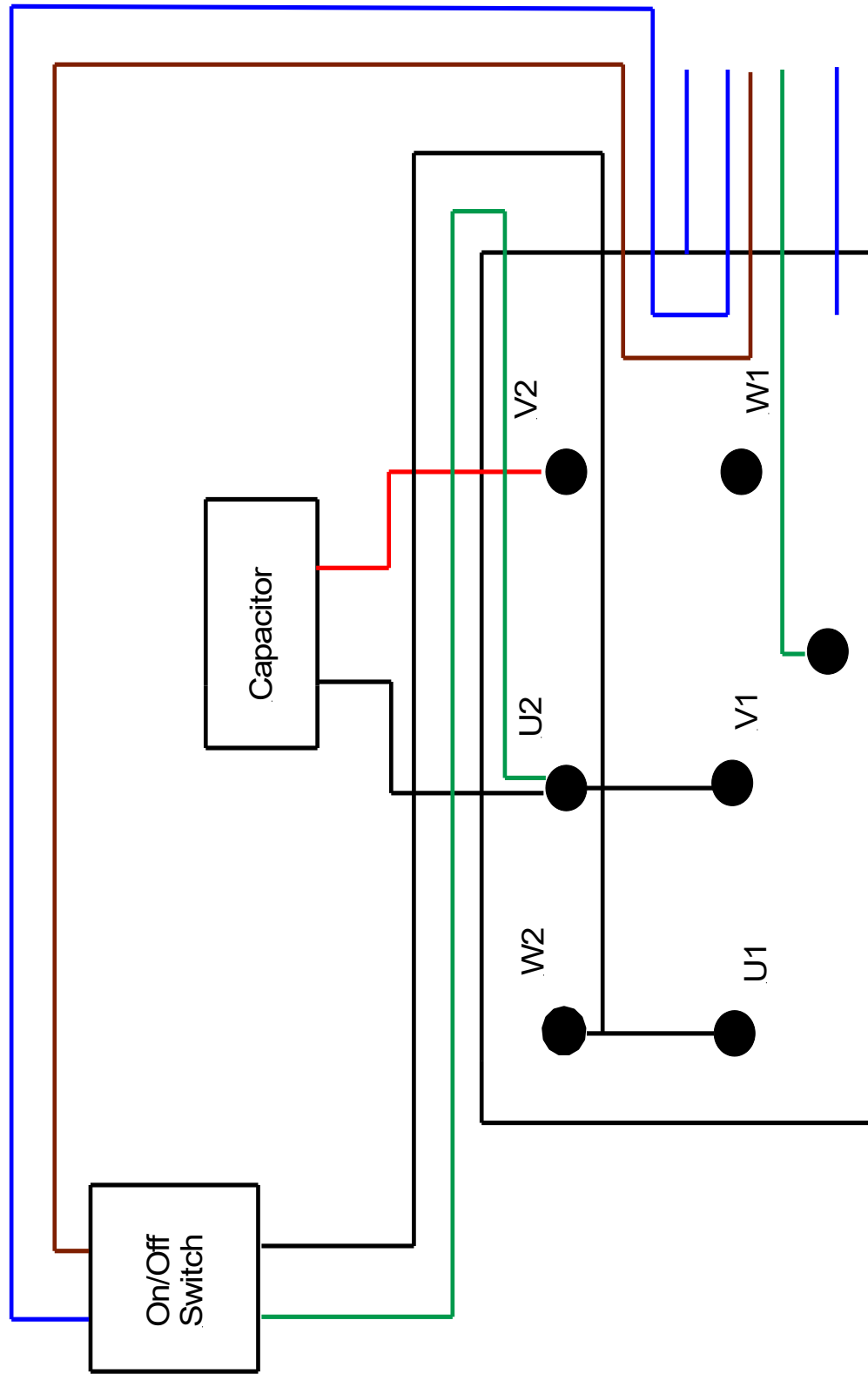
Part Numbers:

DEM10111—Contactor 110V 32 Amp

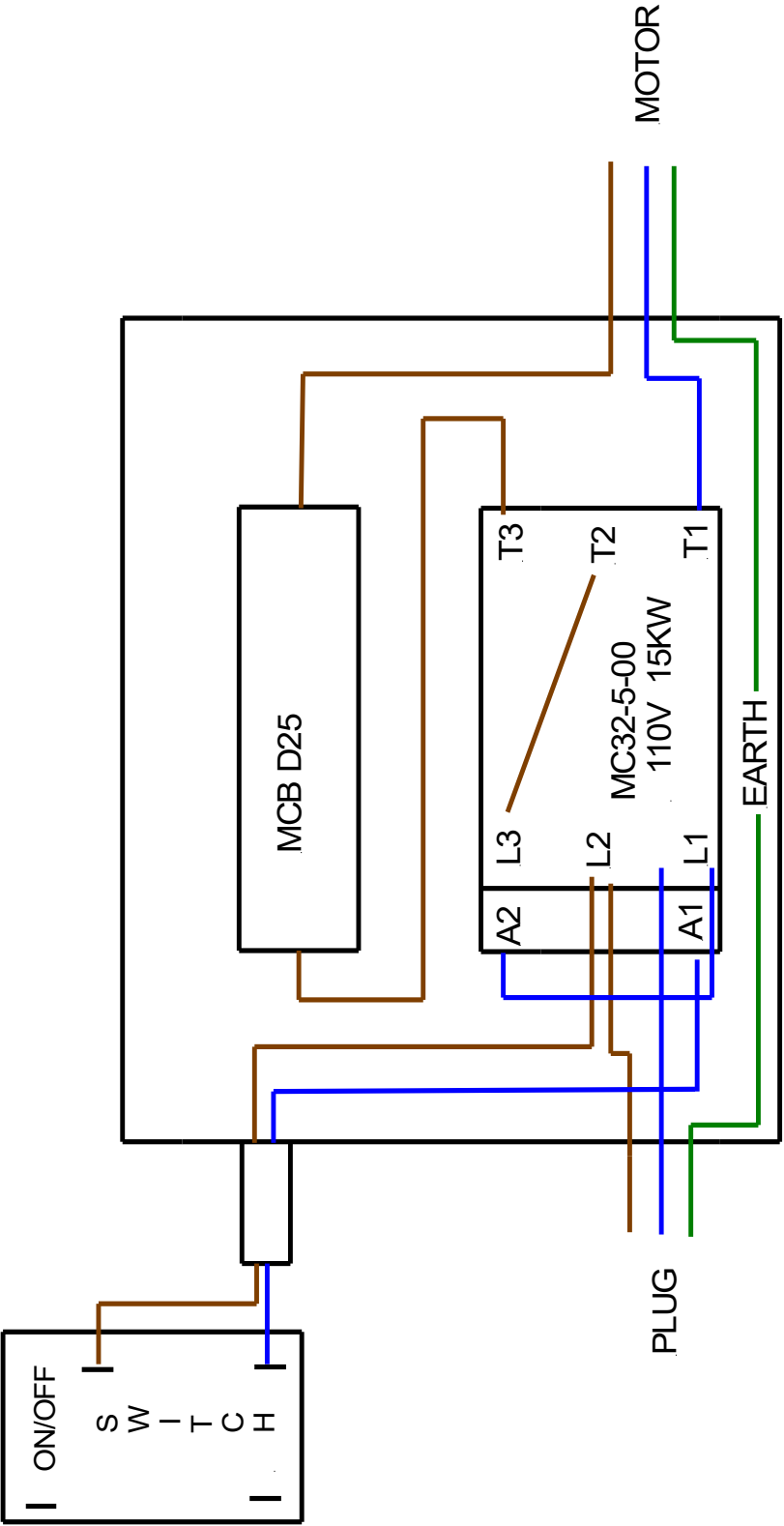
DEM101251—32 Amp MCB Circuit Breaker 240V

DEM10130—25 Amp MCB Circuit Breaker 110V

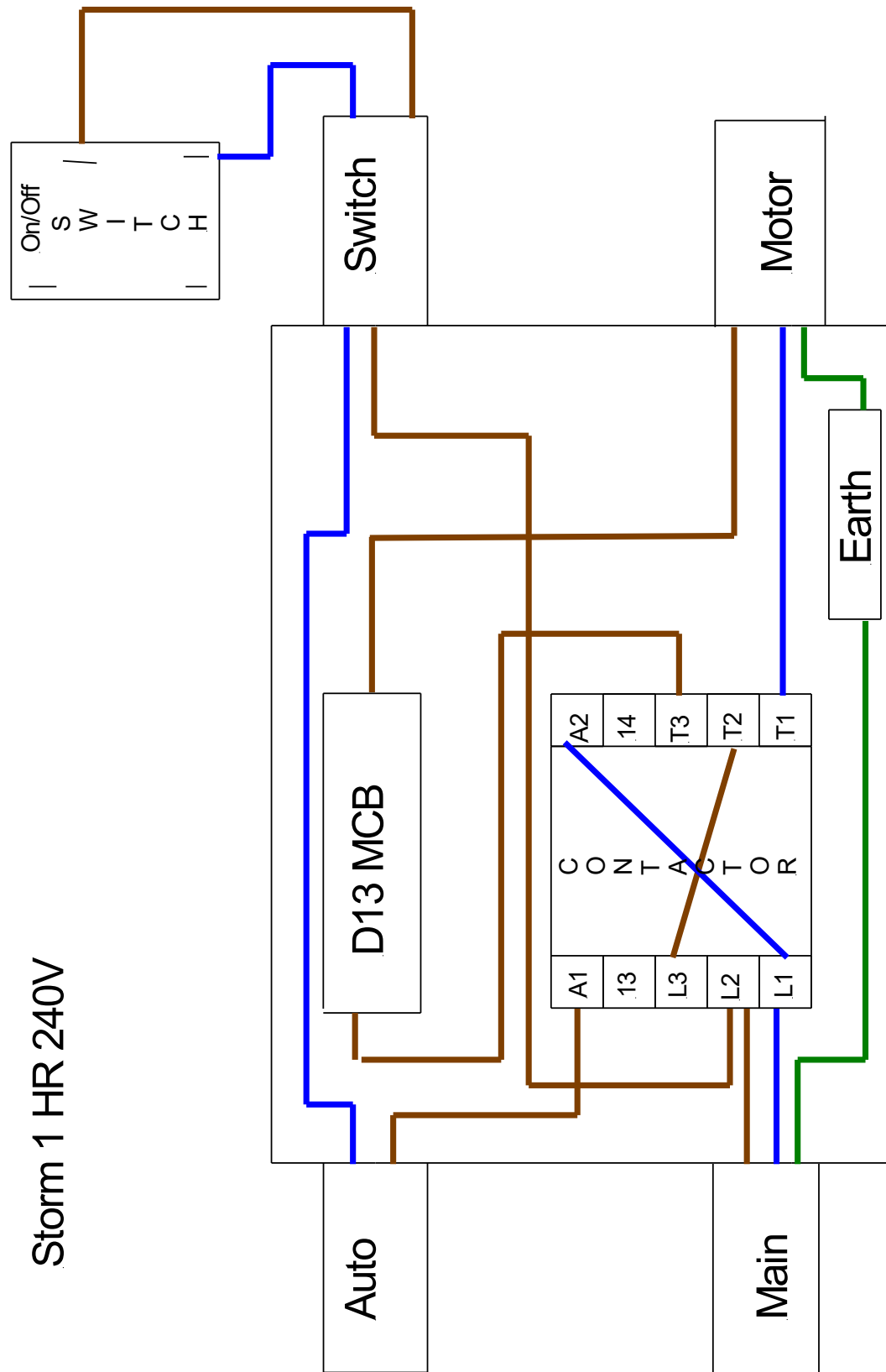
Storm 240V



Storm 2 110V

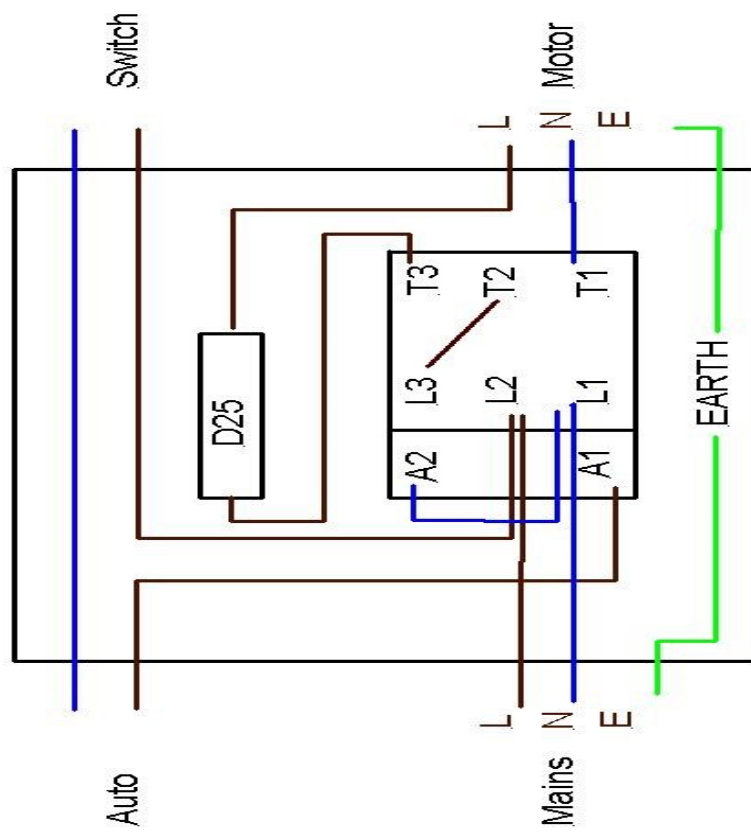


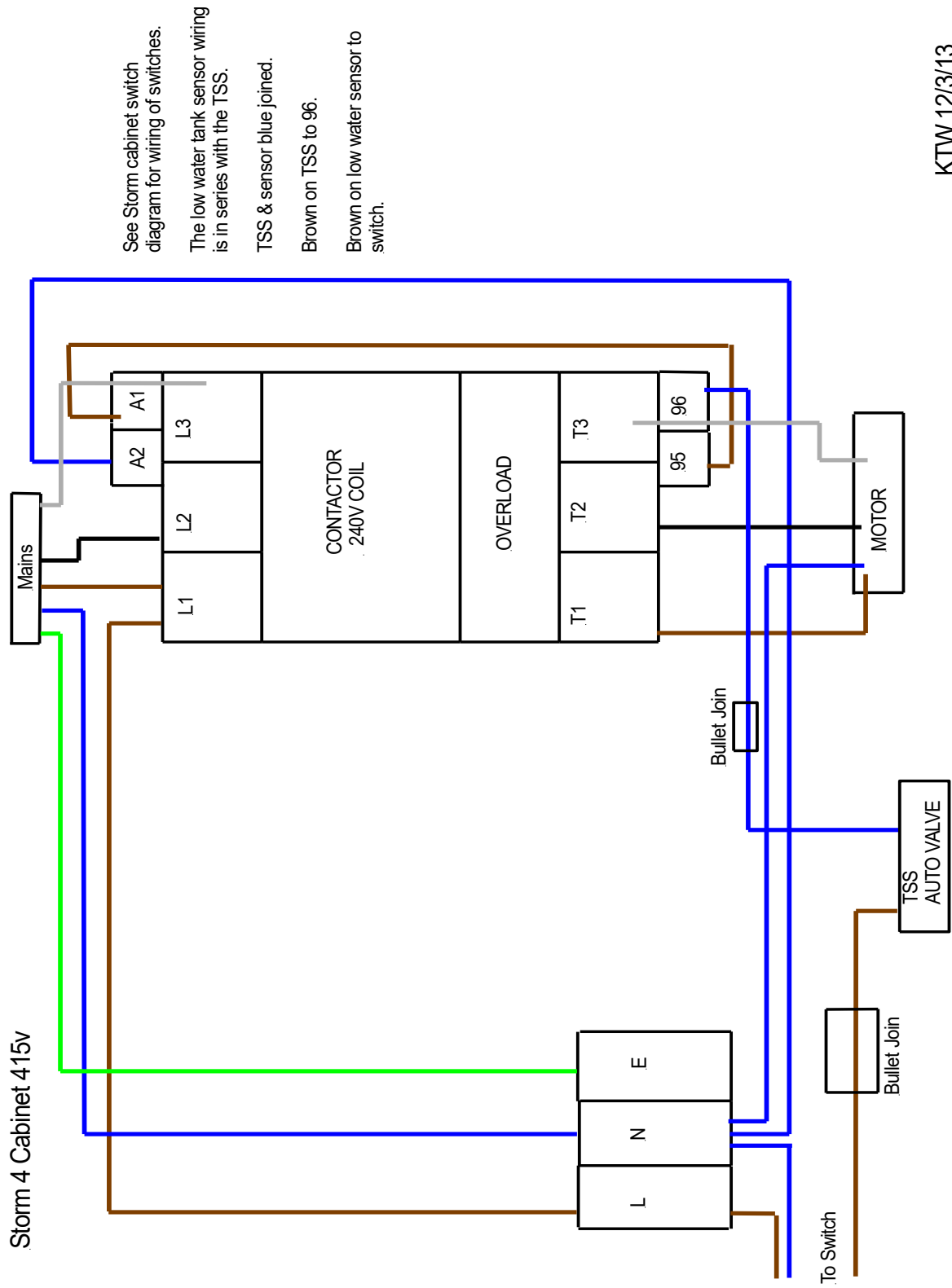
Storm 1 HR 240V



Storm 2 HR

KTW 38/19

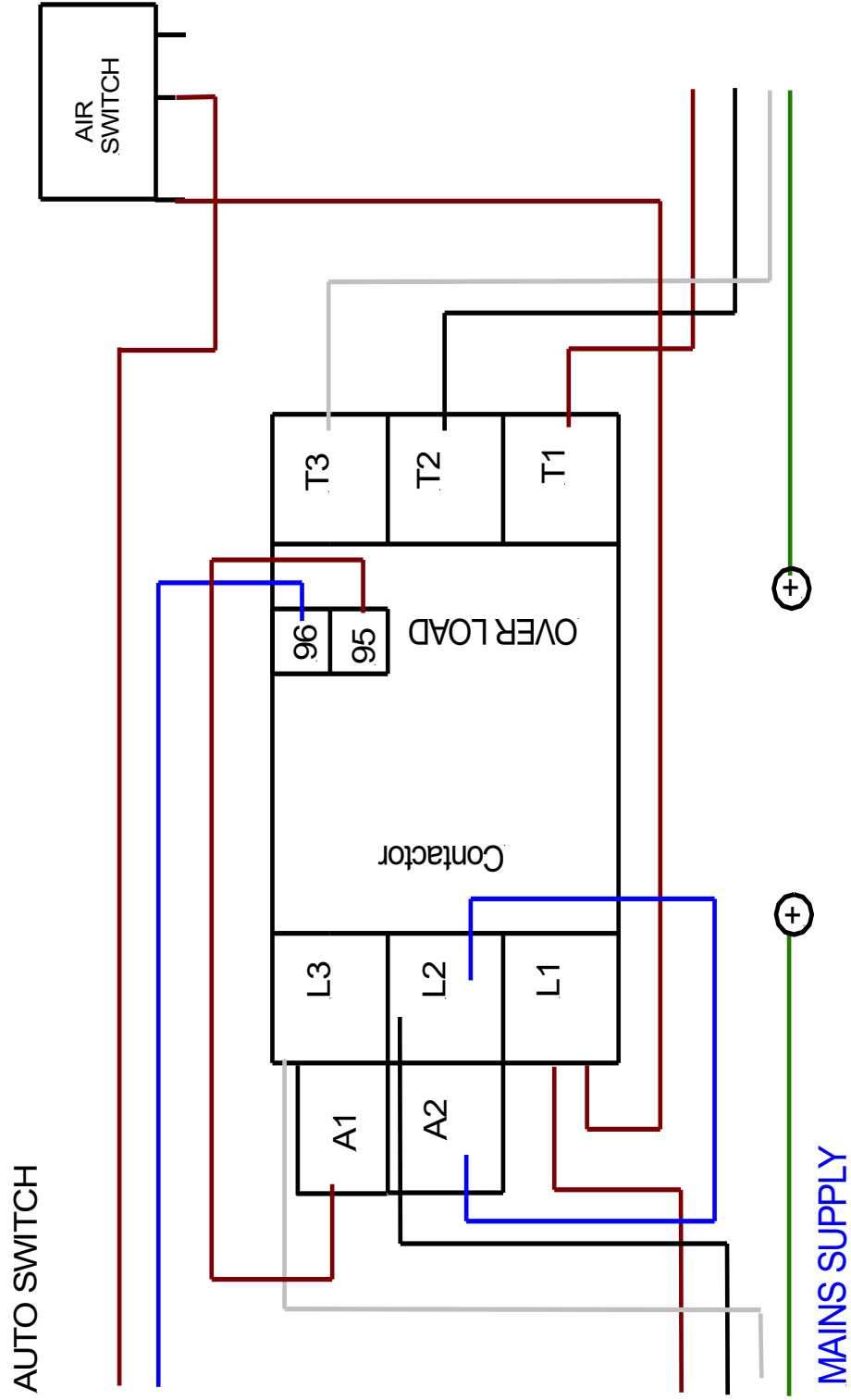




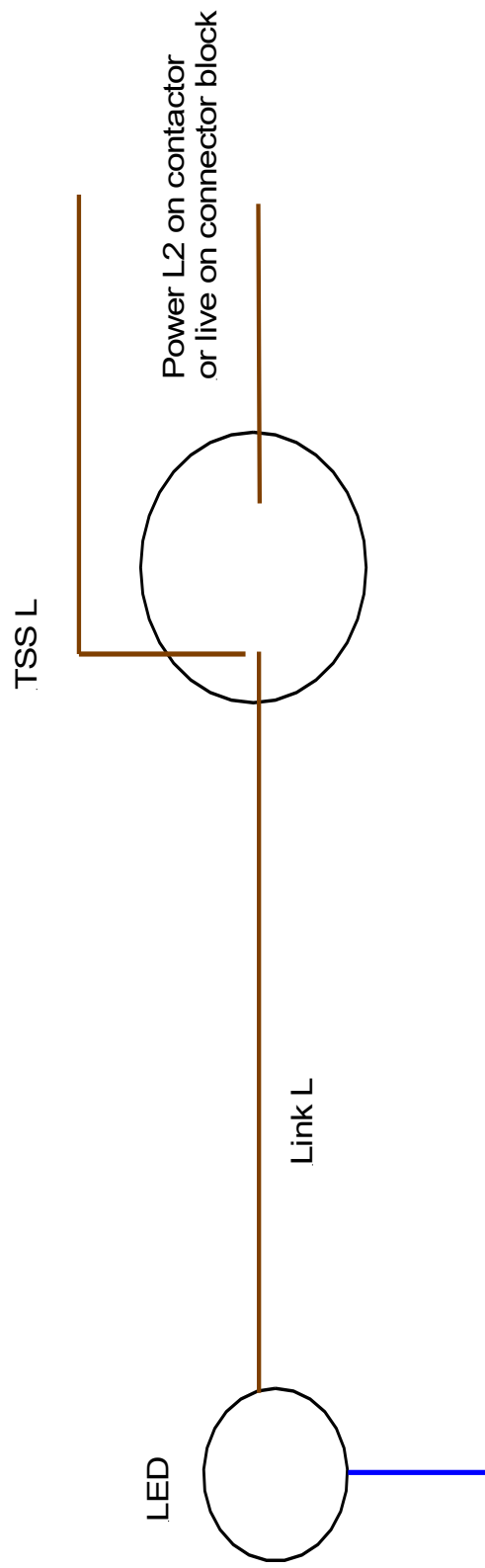
KTW 12/3/13

Storm 4 and Wall Mounted 415v

KW 24/06/11

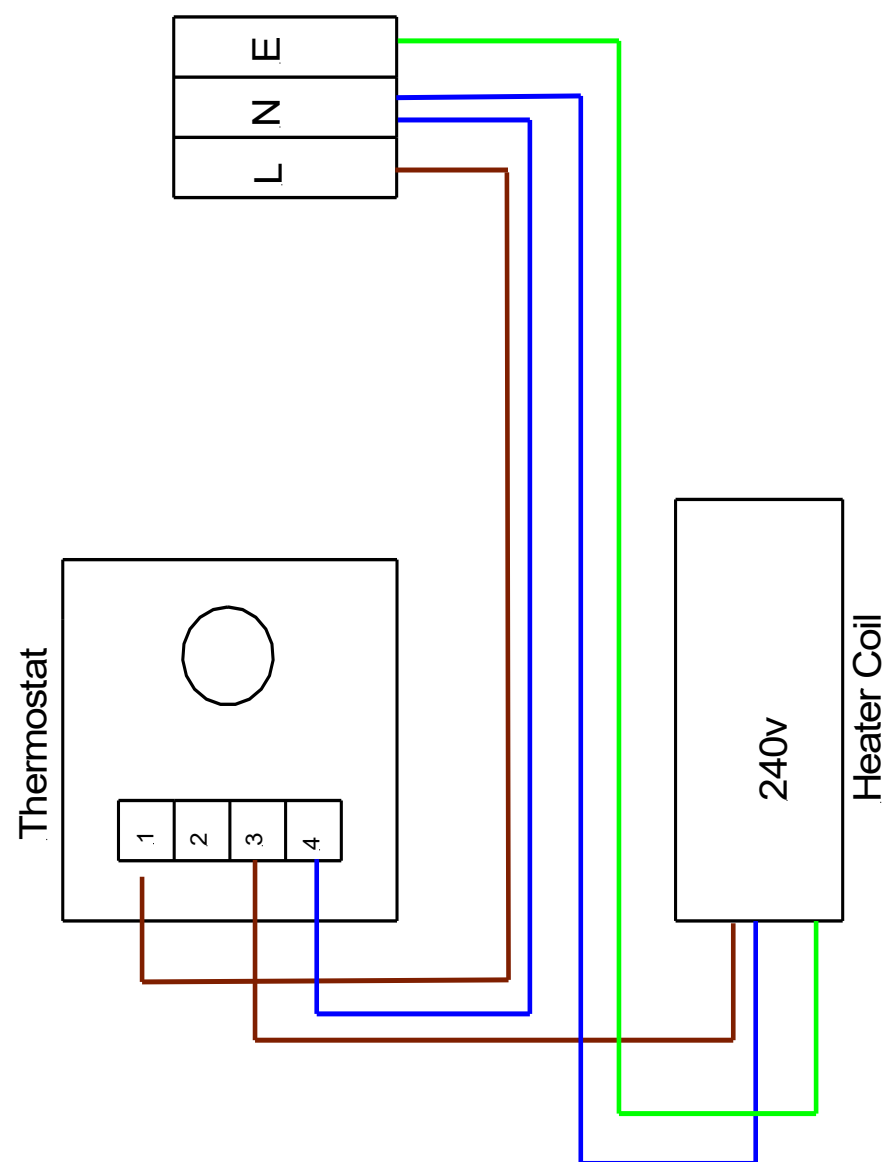


Storm Cabinet Switches



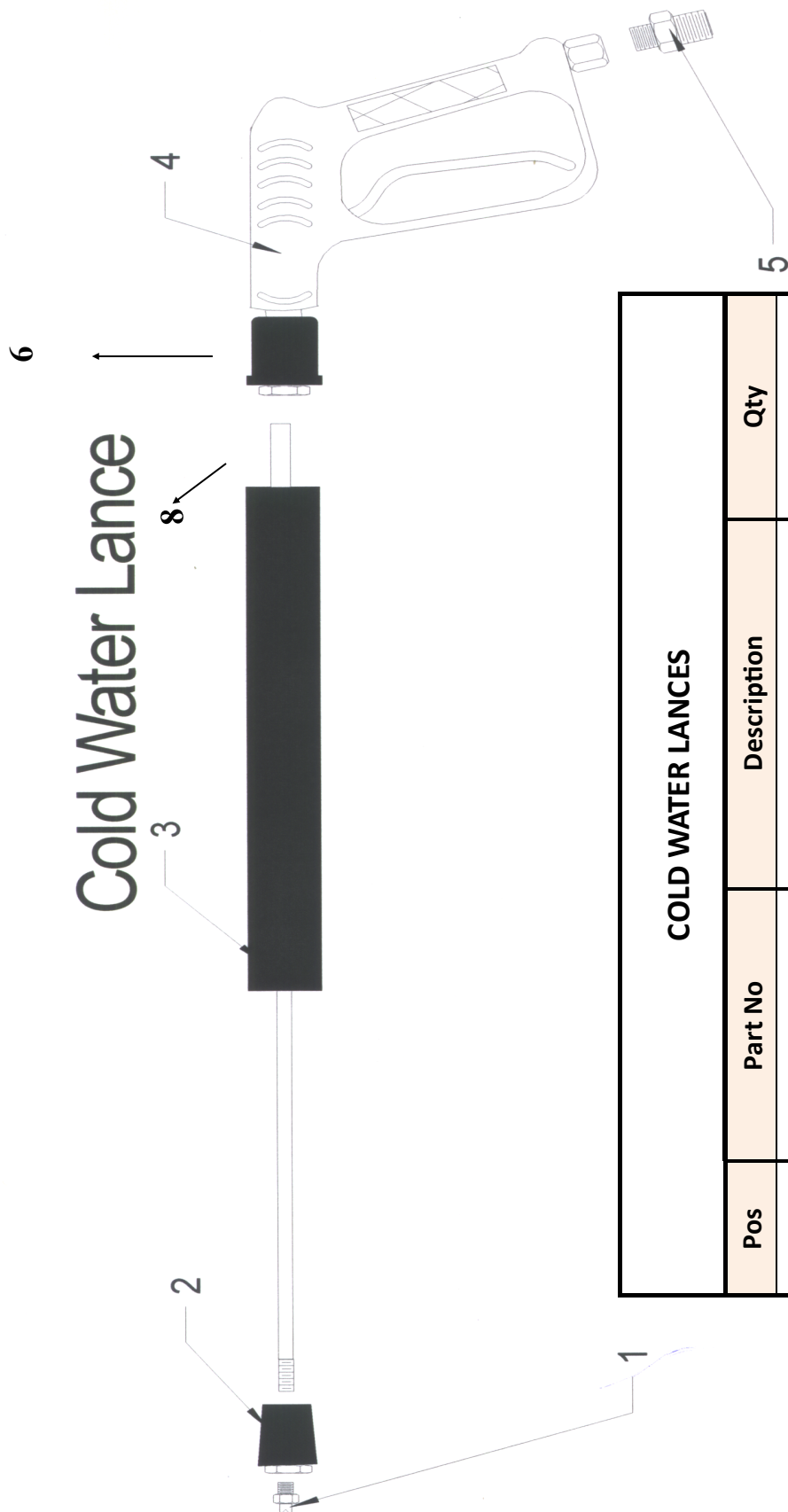
KTW 12/3/13

Frost Stat & Heater Coil (all cabinets)



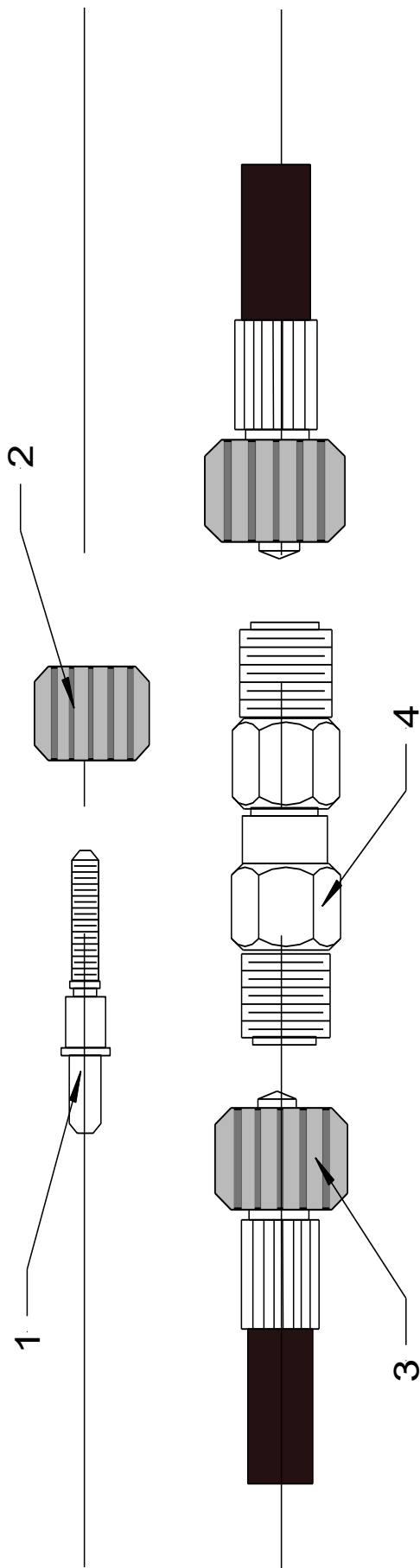
KTW 12/3/13

Cold Water Lance



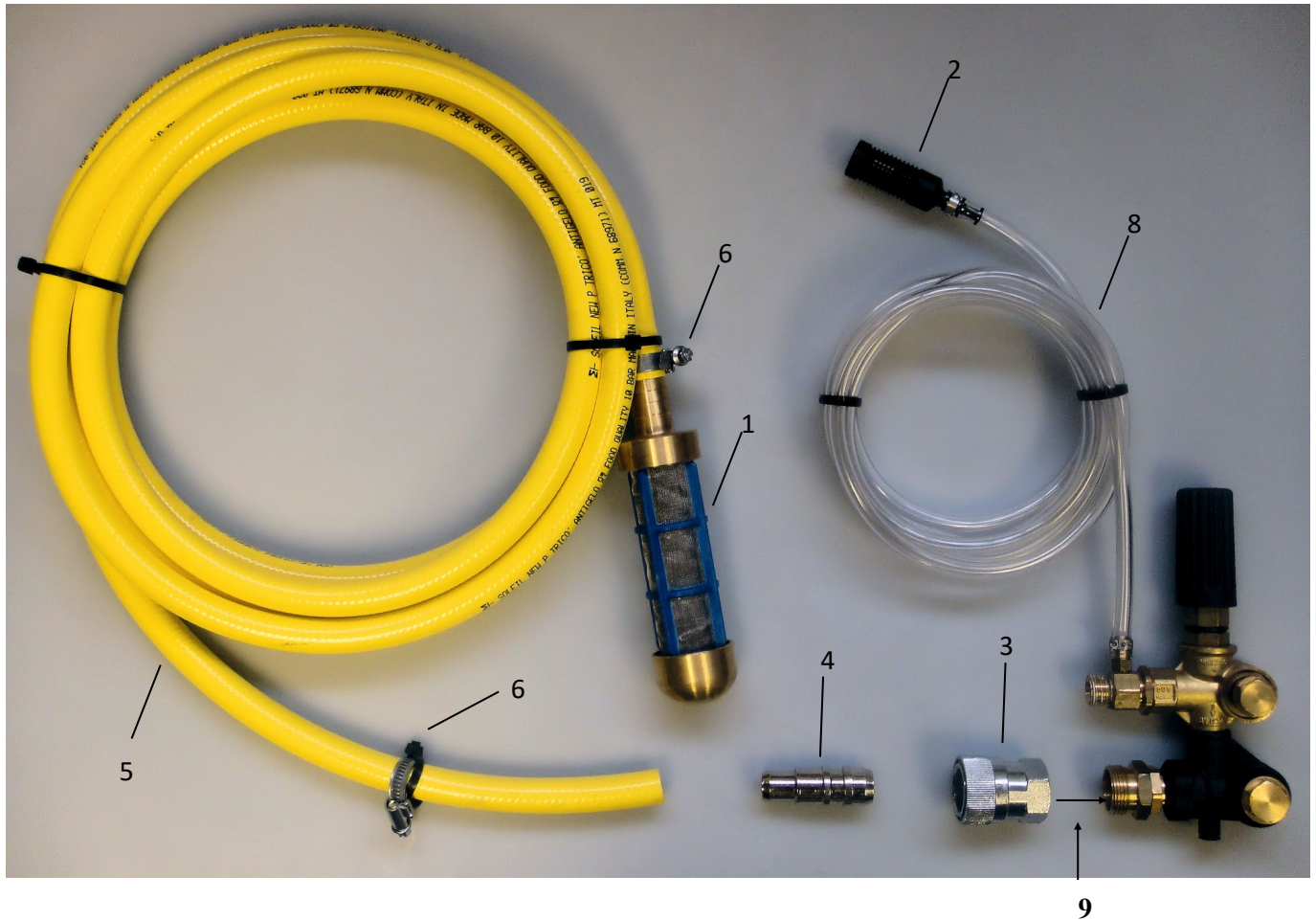
| COLD WATER LANCES | | | | |
|-------------------|--------------|-------------------|-----|--|
| Pos | Part No | Description | Qty | |
| 1 | N26001/15045 | Nozzle | 1 | |
| 2 | MTM190040 | Adjustable Nozzle | 1 | |
| 3 | DEM10031B | QR Lamce | 1 | |
| 4 | DEM10030 | QR Trigger | 1 | |
| 5 | MTM70012 | MVG Coupling | 1 | |

High Pressure Hoses



| | | |
|--------------------------|--------------------|-----------------------|
| 1. | Hose Insert | MV00490 (items 1 & 2) |
| 2. | Nut | |
| 3. | High Pressure Hose | HH00030MVG |
| 4. | Hose Joiner | MV00500 |
| Alternative Hose Lengths | | |
| | 15 Metre | HH00050MVG |
| | 30 Metre | HH00100MVG |

Storm Range Inlet Fittings



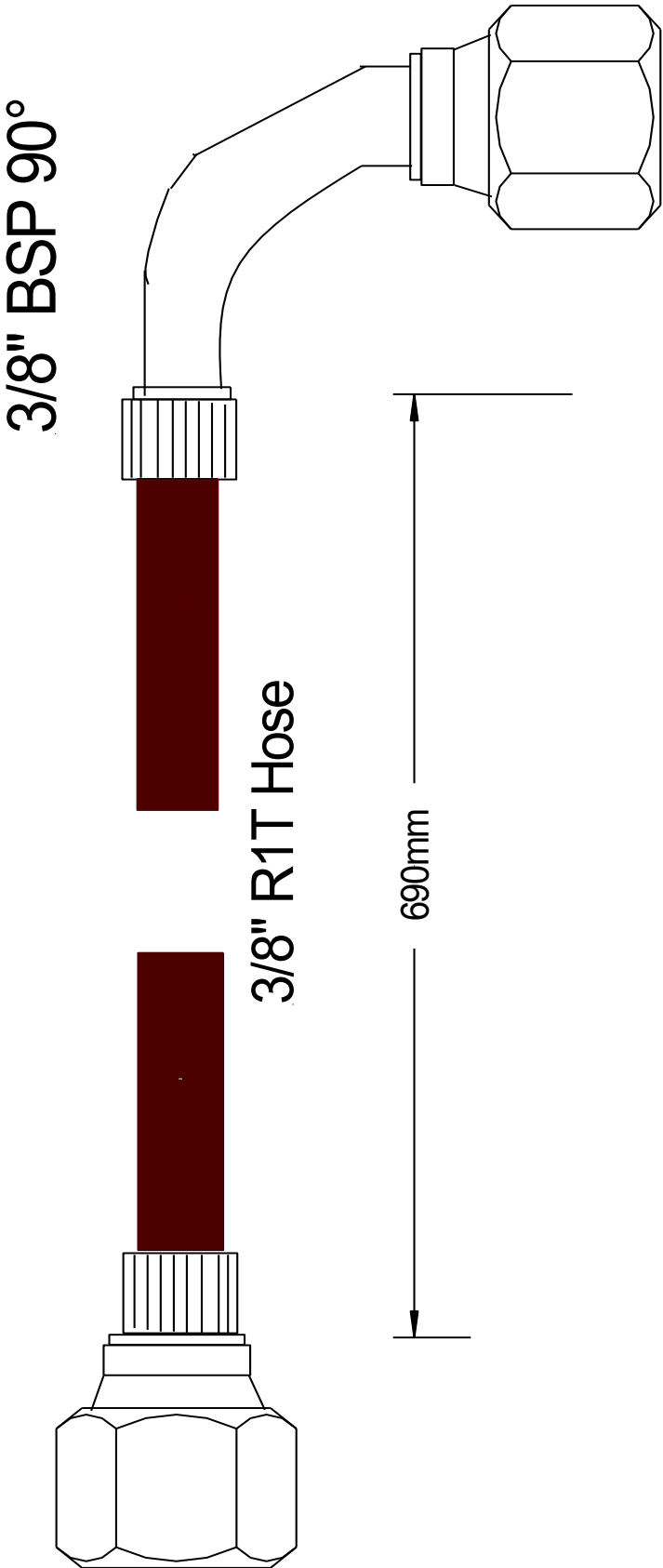
| Position | Part No | Description | Qty |
|----------|---------------------------|--|------|
| 1 | DEM10041 | 100 Mesh Suction Filter | |
| 2 | MTM86010 | Chemical Filter | |
| 3 | MTM73001 | QR Nipple Female | |
| 4 | MTM73020 | QR Nipple Male | |
| 5 | HH0053 | Yellow Hose | |
| 6 | DEM20500 | Jubilee Clip | |
| 7 | DEM10042 INC (1-4-5-6) | Suction filter with Hose and fittings | |
| 8 | DEM10115 | Detergent Pipe (Chemical Pipe) | 3mtr |
| 9 | MTM73K991 | Plastic washer for N0 3 | |

Storm Wall Mounted Internal Hose
Pump head to gauge and Unloader valve to outlet

KTW 25/6/09

HH0010

3/8" BSP 90° Straight



Storm Wall Mounted 415v
Pump to pressure gauge

KTW 29/6/09

HH00101

3/8" BSP 90° Straight

3/8" BSP 90°



Wall Mounted 415v Storm
Unloader valve to outlet

HH00102

KTW 29/6/09

3/8" BSP 90° Straight

3/8" BSP 90°



3/8" R2T Hose

710mm

EC DECLARATION OF CONFORMITY

We **Demon International Ltd**
Of **Abbots Close, Lee Mill Industrial Estate, Ivybridge, Devon PL21 9GA**

Declare that:

Equipment **High Pressure Water Jet Machines**

Model name/number

Serial number

Conforms to the relevant safety and health related requirements of the appropriate EC Directives. This declaration shall cease to be valid if modifications are made to the machine without our approval.

In accordance with the following EU Directives:

73/23/EEC **The Low Voltage Directive** – and its amending directives

89/336/EEC **The Electromagnetic Compatibility Directive** – and its amending directives

98/37/EEC **The Machinery Directive** – and its amending directives

2000/14/EC **Noise Directive**

Harmonised Standards Applied:

EN 292-1 & EN292-2 (now ISO:12100), EN 60335-2-79, EN55014-1, EN55014-2, EN 61000-3-2

Applied national standards and technical specifications:

DS EN 60335-2-79

Applied conformity evaluation method

Appendix V

Sound power level dB(A):

| | Storm 1 | Storm 2 | Storm WM1 | Storm 4 & WM4 | Storm Twin Cabinet 1 | Storm Twin Cabinet 4 |
|------------|---------|---------|-----------|---------------|----------------------|----------------------|
| Measured | 80 | 75 | 80 | 84 | 80 | 84 |
| Guaranteed | 81 | 76 | 81 | 85 | 81 | 85 |

HAV – All triggers and lances have vibration levels below 2.5 m/s/s²

I hereby declare that the equipment named above has been designed to comply with the relevant sections of the above referenced specifications. The unit complies with all essential requirements of the Directives.

Signed:



Martyn Walke

Authority: Technical Director

Date:

Technical Documentation Address: Abbots Close, Lee Mill Industrial Estate, Ivybridge, Devon PL21 9GA

UKCA Declaration of Conformity

We **Demon International Ltd**

Of **Abbots Close, Lee Mill Industrial Estate, Ivybridge, Devon PL21 9GA**

Declare that:

Equipment: Industrial Pressure Washer

Model name/number:

Serial number:

Conforms to the relevant safety and health related requirements of the appropriate UK Legislation. This declaration shall cease to be valid if modifications are made to the machine without our approval.

In accordance with the following UK Legislation:

The Electrical Equipment (Safety) Regulations 2016 – and its amended directives

Electromagnetic Compatibility Regulations 2016 – and its amended directives

Supply of Machinery (Safety) Regulations 2008 – and its amended directives

Noise Emission in the Environment by Equipment for use Outdoors Regulations 2001 – and its amended directives

Harmonised Standards Applied:

British Standards Institution (BSI)

Sound power level dB(A):

| | Storm 1 | Storm 2 | Storm WM1 | Storm 4 & WM4 | Storm Twin Cabinet 1 | Storm Twin Cabinet 4 |
|------------|---------|---------|-----------|---------------|----------------------|----------------------|
| Measured | 80 | 75 | 80 | 84 | 80 | 84 |
| Guaranteed | 81 | 76 | 81 | 85 | 81 | 85 |

HAV – All triggers and lances have vibration levels below 2.5 m/s/s²

I hereby declare that the equipment named above has been designed to comply with the relevant sections of the above referenced specifications. The unit complies with all essential requirements of the UK Legislation.

Signed:



Authority: *Technical Director*

Date:

Technical Documentation Address: Abbots Close, Lee Mill Industrial Estate, Ivybridge, Devon PL21 9GA