



## BK102-C1



### Instructions for use:



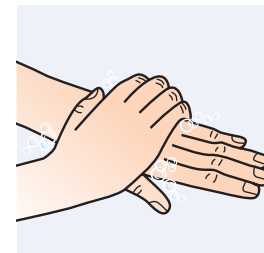
- 1** Insert cartridge into the wall mounted dispenser



- 2** Remove any jewellery from hands and wrists to allow effective cleaning. Wet hands with clean water and apply hand soap.



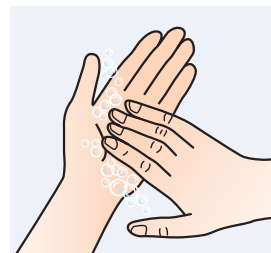
- 3** Rub hands to produce a lather.



- 4** Right palm over the back of the left hand and vice versa.



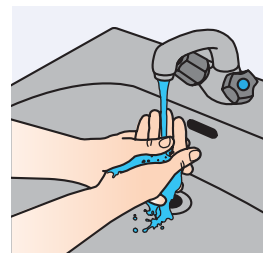
- 5** Intertwine the fingers of the right hand over the left and vice versa. Pay particular attention to the areas between fingers and finger nails.



- 6** Rotationally rub backwards and forwards with clasped fingers of the right hand in the left palm. Change hands and repeat.



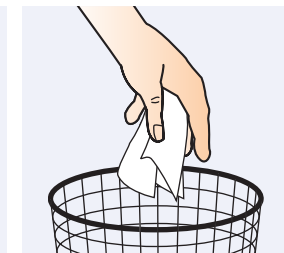
- 7** Grip the left wrist and work cleanser into the skin. Do the same with the right wrist.



- 8** Rinse of all traces of soap and lather with clean water.



- 9** Dry hands thoroughly with a disposable paper towel.



- 10** Discard paper towel in waste bin, avoid touching the bin.

### Areas for use



### Health & Safety

Please refer to relevant COSHH Safety Data Sheet

[www.jangro.net](http://www.jangro.net)

Scan QR code for further product details

